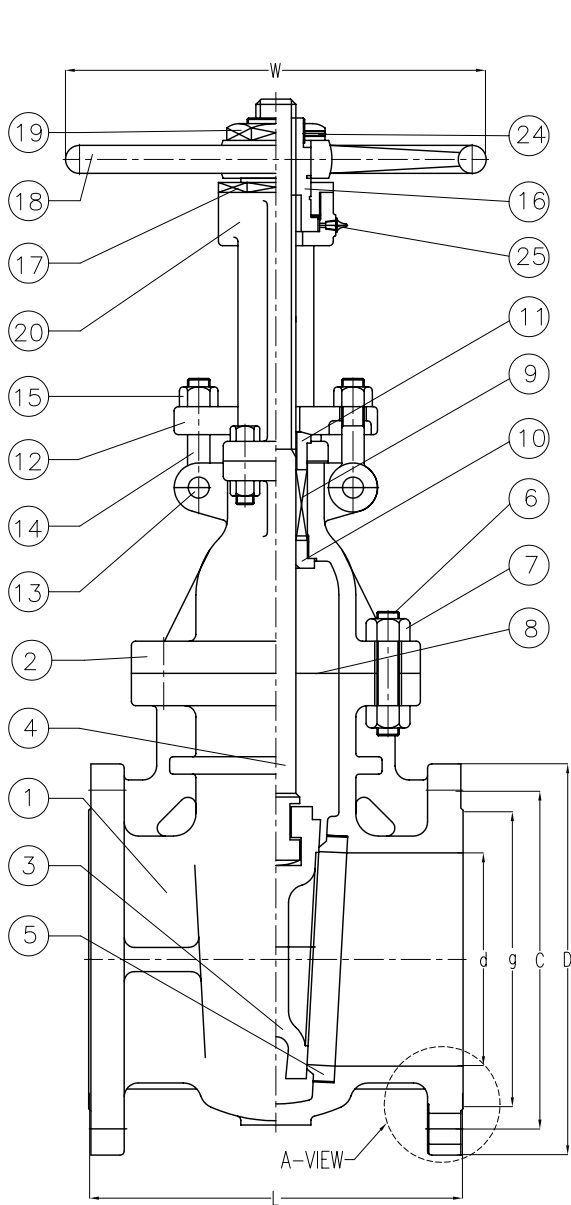
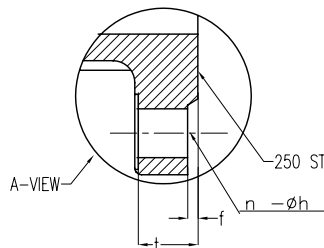
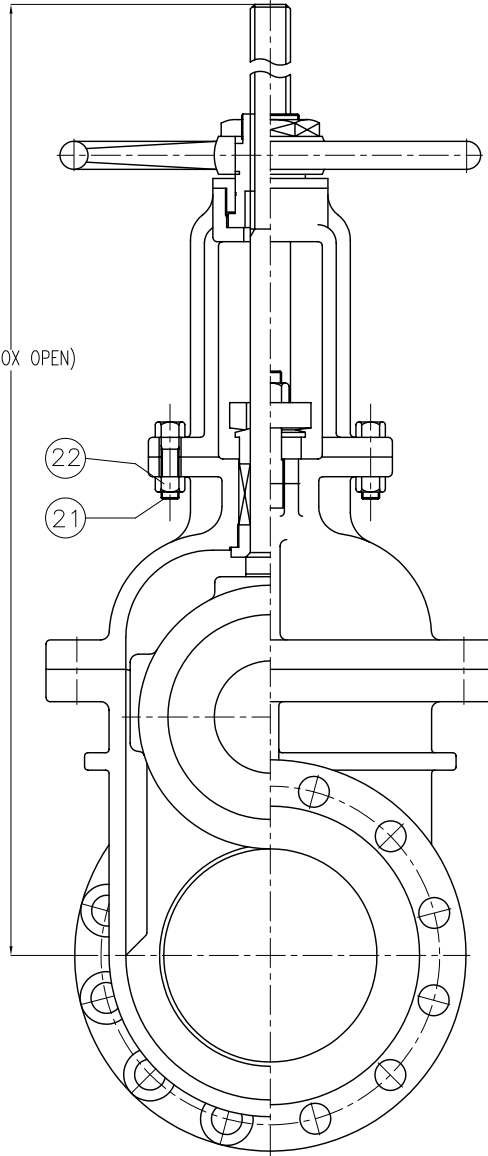


Wm. E. Williams No. 15F2, 15F4, 15F4-AB Class 150 RF OS&Y WCB Gate Valve ASTM A 216



H(APPROX OPEN)



		BILL OF MATERIALS			
		15F2	15F4	15F4-AB	
NO.	PART NAME	API TRIM 8 (410/HF)	BRONZE TRIM	ALUM-BRZ TRIM	QTY
1	BODY	A216Gr WCB	A216Gr WCB	A216Gr WCB	1
2	BONNET	A216Gr WCB	A216Gr WCB	A216Gr WCB	1
3	DISC	WCB 216 Co-CrA STEEL. HF	A216Gr WCB With BC Welding	WCB W/B148 FACE	1
4	STEM	A479 Gr410 (13Cr)	ASTM B124	B148 C955000 AL-BRZ	1
5	SEAT RING	A105 H/F CO-CrA	A105 With BC Welding	A105 W/B148 C955000 AL BRZ	2
6	BONNET BOLT	A193Gr B7	A193Gr B7	A193Gr B7	1SET
7	BONNET NUT	A194Gr 2H	A194Gr 2H	A194Gr 2H	1SET
8	GASKET	P#1400G	P#1400G	P#1400G	1
9	PACKING	P#6610+P#6528	P#6610+P#6528	P#6610+P#6528	1SET
10	BACK SEAT	A479Gr 410	A479Gr 410	A479Gr 410	1
11	GLAND RING	A479Gr 410	A479Gr 410	A479Gr 410	1
12	GLAND FLANGE	A105 or WCB	A105 or WCB	A105 or WCB	1
13	HINGE PIN	A105 or 410	A105 or 410	A105 or 410	2
14	GLAND BOLT	A307Gr B	A307Gr B	A307Gr B	2
15	GLAND NUT	A307Gr B	A307Gr B	A307Gr B	2
16	YOKE SLEEVE	A439Gr D2C	A439Gr D2C	A439Gr D2C	1
17	SLEEVE NUT	A479Gr 410 or WCB	A479Gr 410 or WCB	A479Gr 410 or WCB	1
18	HAND WHEEL	A197	A197	A197	1
19	HANDLE NUT	A479Gr 410 or WCB	A479Gr 410 or WCB	A479Gr 410 or WCB	1
20	YOKE	A216Gr WCB	A216Gr WCB	A216Gr WCB	1
21	YOKE BOLT	A307Gr B	A307Gr B	A307Gr B	4
22	YOKE NUT	A307Gr B	A307Gr B	A307Gr B	4
23	BEARING	STEEL	STEEL	STEEL	2
24	SET SCREW	STEEL	STEEL	STEEL	1
25	GREASE NIPPLE	STEEL	STEEL	STEEL	1

UNIT:INCH

SIZE	d	L	D	C	g	t	f	n-h	H	w
2.00	2.00	7.00	6.00	4.75	3.63	0.63	0.060	4-0.75	15.75	7.00
2.50	2.50	7.50	7.00	5.55	4.13	0.69	0.060	4-0.75	16.75	7.00
3.00	3.00	8.00	7.50	6.00	5.00	0.75	0.060	4-0.75	21.12	9.82
4.00	4.00	9.00	9.00	7.50	6.18	0.94	0.060	8-0.75	22.37	10.50
5.00	5.00	10.00	10.00	8.50	7.32	0.94	0.060	8-0.87	26.37	10.50
6.00	6.00	10.50	11.00	9.50	9.50	1.00	0.060	8-0.87	31.22	12.00
8.00	8.00	11.50	13.50	11.75	10.63	1.13	0.060	8-0.87	38.85	15.00
10.00	10.00	13.00	16.00	14.25	12.75	1.19	0.060	12-1.00	46.88	15.75
12.00	12.00	14.00	19.00	17.00	15.00	1.25	0.060	12-1.00	54.29	17.71
14.00	13.25	15.00	21.00	18.75	16.25	1.38	0.060	12-1.12	66.88	22.00
16.00	15.25	16.00	23.50	21.25	18.50	1.44	0.600	16-1.12	71.25	22.00
18.00	17.25	17.00	25.00	22.75	21.00	1.56	0.060	16-1.25	80.70	23.62
20.00	19.25	18.00	27.00	25.00	23.00	1.69	0.060	20-1.25	83.85	25.60
24.00	23.25	20.00	32.00	29.50	27.25	1.88	0.060	20-1.37	103.5	25.60

*Larger sizes available.



MARKING SYSTEM	MSS-SP-25	INSPECTION & TEST: API 598
DIM.OF FLANGE	ANSI B16.5	SHELL HYDRO 450PSI
FACE TO FACE	ANSI B16.10	SEAT AIR 80PSI
WALL THICKNESS	API 600	BACK SEAT HYDRO 315 PSI
DESIGNED	API 600, ANSI B16.34	

TITLE	CAST STEEL GATE VALVE CLASS 150 RF BB OS&Y		
SCALE	Fig #	DRAWING NO.	REV.
NONE	SEE ABOVE	38GA060300	00