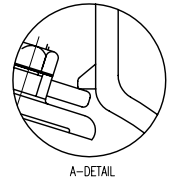
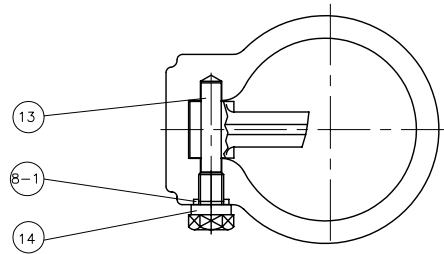
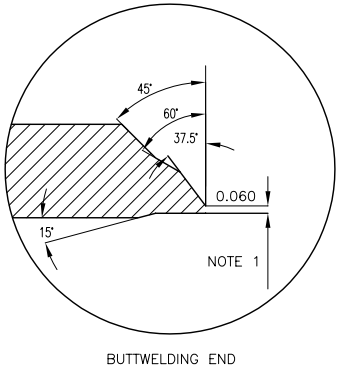
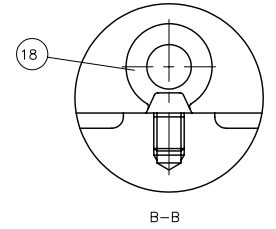
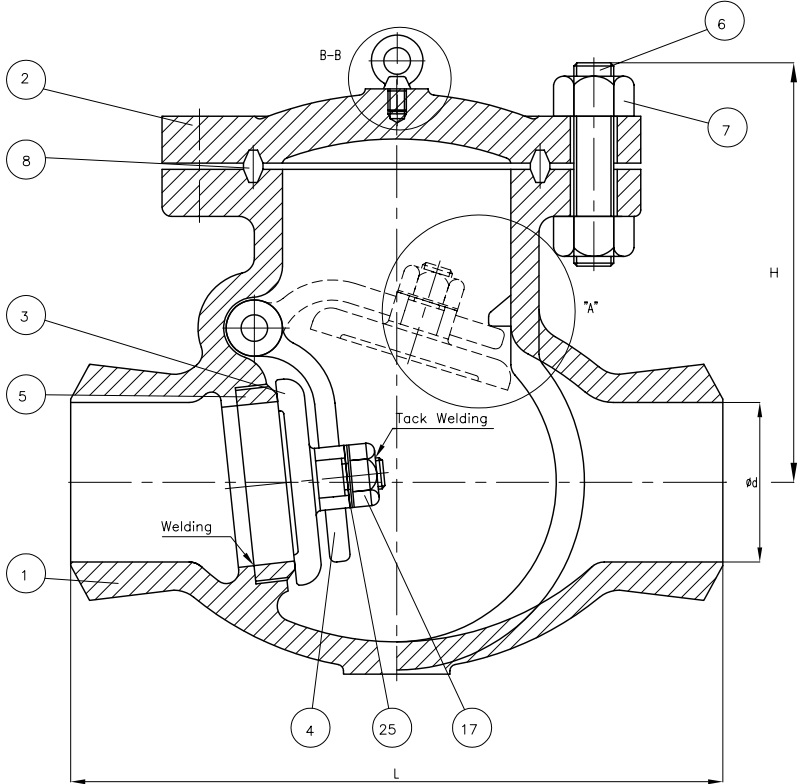


Wm. E. Williams No. 1501W2 Class 1500 BW Swing Check Valve ASTM A216 WCB



BILL OF MATERIALS			
NO.	PART NAME	MATERIALS	Q'TY
1	BODY	A216Gr WCB	1
2	COVER	A216Gr WCB	1
3	DISC	6" & BELOW	A217Gr CA15
		8" & OVER	A216Gr WCB With 13Cr Welding
4	ARM	A216Gr WCB	1
5	SEAT RING	A105 With STELLITE Welding	1
6	COVER BOLT	A193Gr B7	1SET
7	COVER NUT	A194Gr 2H	1SET
8	GASKET	P#1500	1
8-1	PIN GASKET	P#1300	1
13	HINGE PIN	A479Gr 410	1
14	HINGE BOLT	A307Gr B	1
17	DISC NUT	A194Gr 8	1
18	EYE BOLT	A307Gr B	1
25	WASHER	STEEL	1

NOTE:
 1. SPECIFY PIPE SCHEDULE No. REQUIRED.
 2. TRIM #2, (API #8), OTHER TRIMS AVAILABLE

UNIT: INCH

SIZE	d	L	H
2.00	1.88	14.50	10.59
2.50	2.25	16.50	11.06
3.00	2.75	18.50	11.69
4.00	3.62	21.50	14.09
6.00	5.38	27.75	18.54
8.00	7.00	32.75	22.83
10.00	8.75	39.00	25.12
12.00	10.38	44.50	28.03
14.00	11.38	49.50	32.83
16.00	13.00	54.50	35.12
18.00	14.62	60.50	37.80
20.00	16.38	65.50	40.16
24.00	19.62	76.50	44.82

MARKING SYSTEM	MSS-SP-25	INSPECTION & TEST: API 598		
BUTTWELDING	ANSI B16.25	SHELL	HYDRO	5575PSI
FACE TO FACE	ANSI B16.10	SEAT	HYDRO	4080PSI
WALL THICKNESS	API 600	BACK SEAT	HYDRO	
OVERALL	API 600, ANSI B16.34			

▲					
▲					
▲	ISSUED FOR PROPOSAL				
NO.	DATE	DESCRIPTION	PRP'D	REV'D	APP'D
TITLE: CAST STEEL SWING CHECK VALVE CLASS 1500 B.C. BUTTWELDED END					
SCALE	Fig No.	DRAWING NO.		REV.	
NONE	1501W2	60SC060150		0	