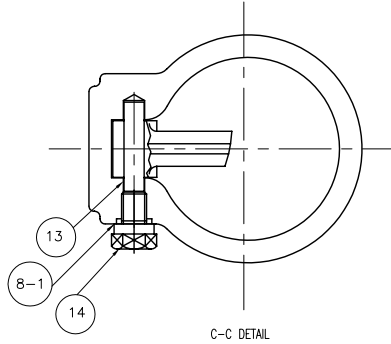
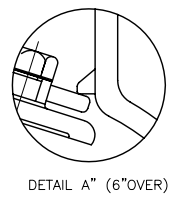
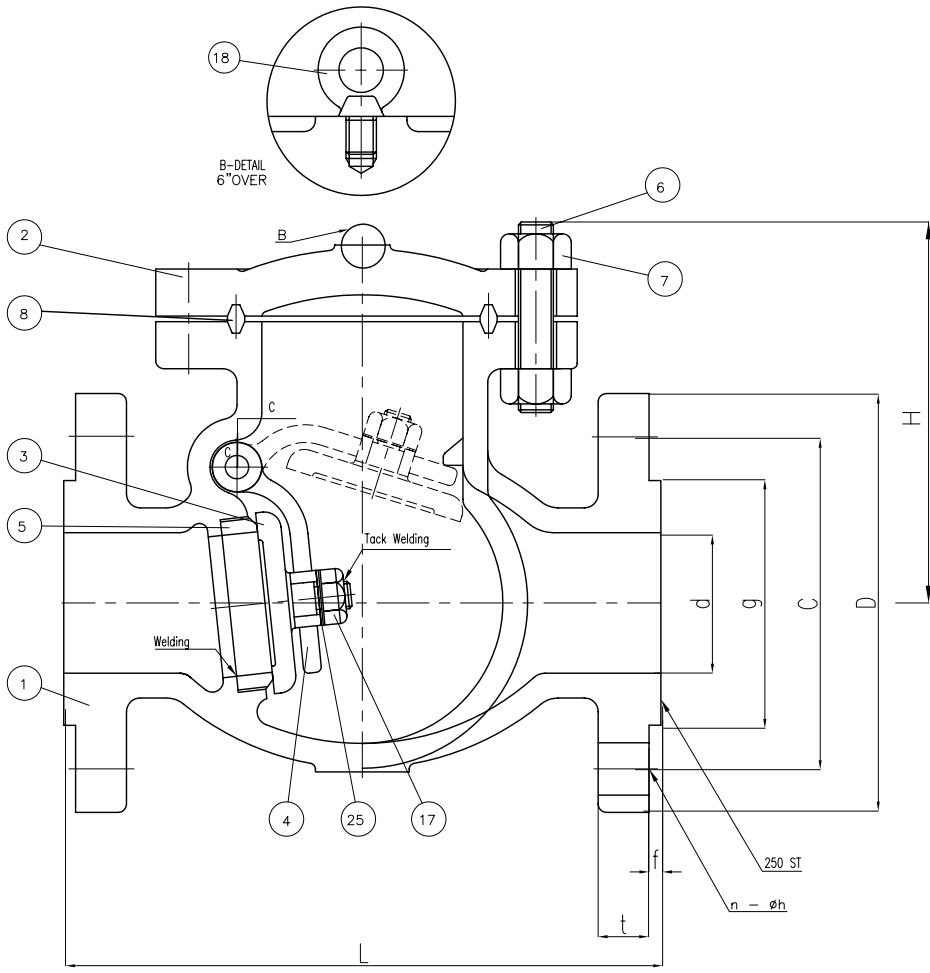


Wm. E. Williams No. 1501F2 Class 1500 RF Swing Check Valve ASTM A 216 WCB (API Trim 8)



BILL OF MATERIALS				
NO.	PART NAME	MATERIALS	Q'TY	
1	BODY	A216Gr WCB	1	
2	COVER	A216Gr WCB	1	
3	DISC	6" & BELOW	A217Gr CA15	1
		8" & OVER	A216Gr WCB With 13Cr Welding	
4	ARM	A216Gr WCB	1	
5	SEAT RING	A105 H/F WITH CO-Cr A	1	
6	COVER BOLT	A193Gr B7	1SET	
7	COVER NUT	A194Gr 2H	1SET	
8	GASKET	P#1500	1	
8-1	PIN GASKET	P#1300	1	
13	HINGE PIN	A479Gr 410	1	
14	HINGE BOLT	A307Gr B	1	
17	DISC NUT	A194Gr 8	1	
18	EYE BOLT	A307Gr B	1	
25	WASHER	STEEL	1	

UNIT: INCH

SIZE	d	L	D	C	g	t	f	n-h	H
2.00	1.87	14.50	8.50	6.50	3.62	1.75	0.25	8-1.00	10.12
3.00	2.75	18.50	10.50	8.00	5.00	2.13	0.25	8-1.25	15.75
4.00	3.62	21.50	12.25	9.50	6.19	2.37	0.25	8-1.37	16.25
6.00	5.37	27.75	15.50	12.50	8.50	3.50	0.25	12-1.50	22.50
8.00	7.00	32.75	19.00	15.00	10.62	3.87	0.25	12-1.75	24.60

MARKING SYSTEM	MSS-SP-25	INSPECTION & TEST: API 598		
DIM. OF FLANGE	ANSI B16.5	SHELL	HYDRO	5515PSI
FACE TO FACE	ANSI B16.10	SEAT	HYDRO	4100PSI
WALL THICKNESS	API 600	BACK SEAT	HYDRO	
DESIGNED	ANSI B16.34			

△					
△	CORRECT "L" DIM				
△	ISSUED FOR PROPOSAL				
NO.	DATE	DESCRIPTION	PRP'D	REV'D	APP'D



TITLE		CAST STEEL SWING CHECK VALVE CLASS 1500 B.C R.F		
SCALE	Fig #	DRAWING NO.	REV.	
NONE	1501F2	60SC060149	01	