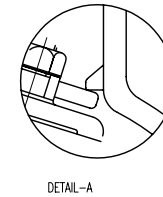
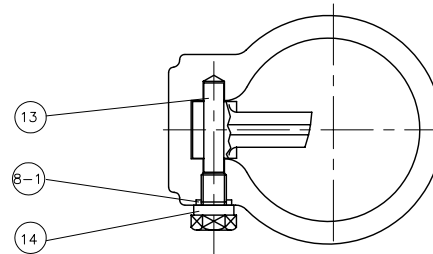
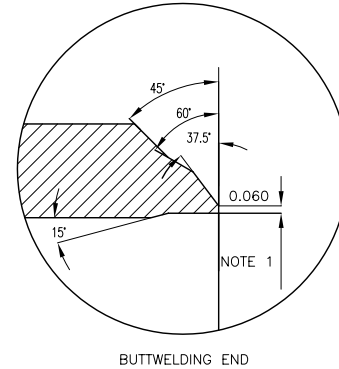
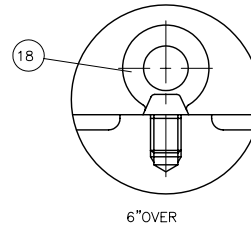
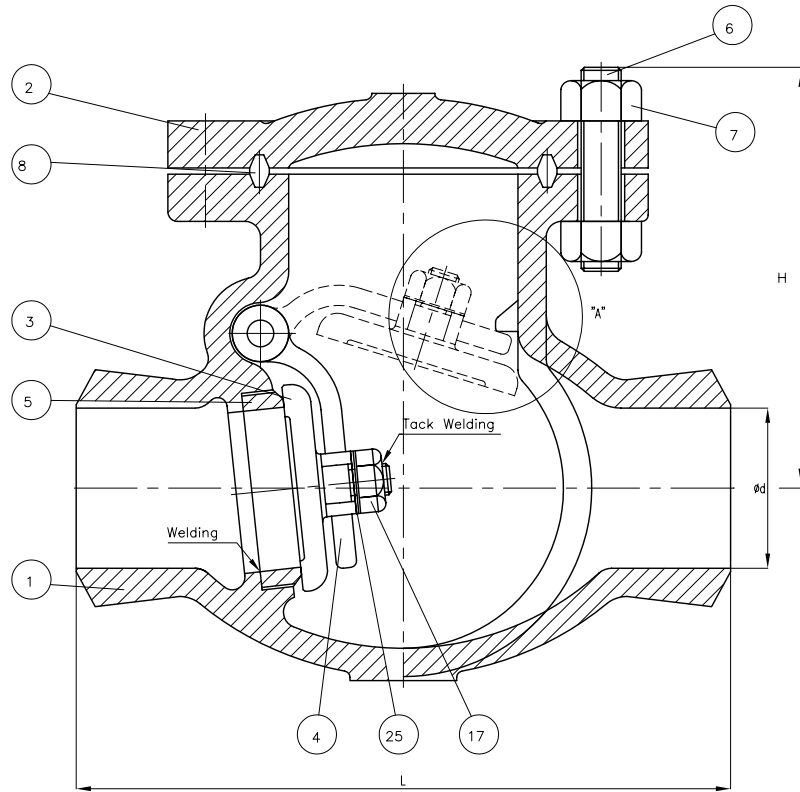


# Wm. E. Williams No. 901W2 Class 900 BW Swing Check Valve ASTM A216 WCB



BILL OF MATERIALS				
NO.	PART NAME	MATERIALS	Q'TY	
1	BODY	A216Gr WCB	1	
2	COVER	A216Gr WCB	1	
3	DISC	6" & BELOW	A217Gr CA15	1
		8" & OVER	A216Gr WCB With 13Cr Welding	
4	ARM	A216Gr WCB	1	
5	SEAT RING	A105 With STELLITE Welding	1	
6	COVER BOLT	A193Gr B7	1SET	
7	COVER NUT	A194Gr 2H	1SET	
8	GASKET	P#1500	1	
8-1	PIN GASKET	P#1300	1	
13	HINGE PIN	A479Gr 410	1	
14	HINGE BOLT	A307Gr B	1	
17	DISC NUT	A194Gr 8	1	
18	EYE BOLT	A307Gr B	1	
25	WASHER	STEEL	1	

**NOTE:**

- SPECIFY PIPE SCHEDULE No. REQUIRED.
- TRIM #2, (API #8), OTHER TRIMS AVAILABLE

UNIT: INCH

SIZE	d	L	H
2.00	1.88	14.55	10.43
2.50	2.55	16.50	11.34
3.00	2.88	15.00	11.65
4.00	3.88	18.00	11.77
6.00	4.75	24.00	13.54
8.00	7.50	29.00	18.39
10.00	9.38	33.00	19.92
12.00	11.12	38.00	23.19
14.00	12.25	40.50	27.52
16.00	14.00	44.50	30.04
18.00	15.75	48.00	31.97
20.00	17.50	52.00	35.31
24.00	21.00	61.75	38.82

MARKING SYSTEM	MSS-SP-25	INSPECTION & TEST: API 598		
BUTTWELDING	ANSI B16.25	SHELL	HYDRO	3350PSI
FACE TO FACE	ANSI B16.10	SEAT	HYDRO	2450PSI
WALL THICKNESS	API 600	BACK SEAT	HYDRO	
OVERALL	API 600, ANSI B16.34			

△					
△					
△	ISSUED FOR PROPOSAL				
NO.	DATE	DESCRIPTION	PRP'D	REV'D	APP'D
		 <b>WILLIAMS</b> VALVE CORPORATION			
TITLE		CAST STEEL SWING CHECK VALVE CLASS 900 B.C. BUTTWELD END			
SCALE	Fig No.	DRAWING NO.		REV.	
NONE	901W2	60SC060148		0	