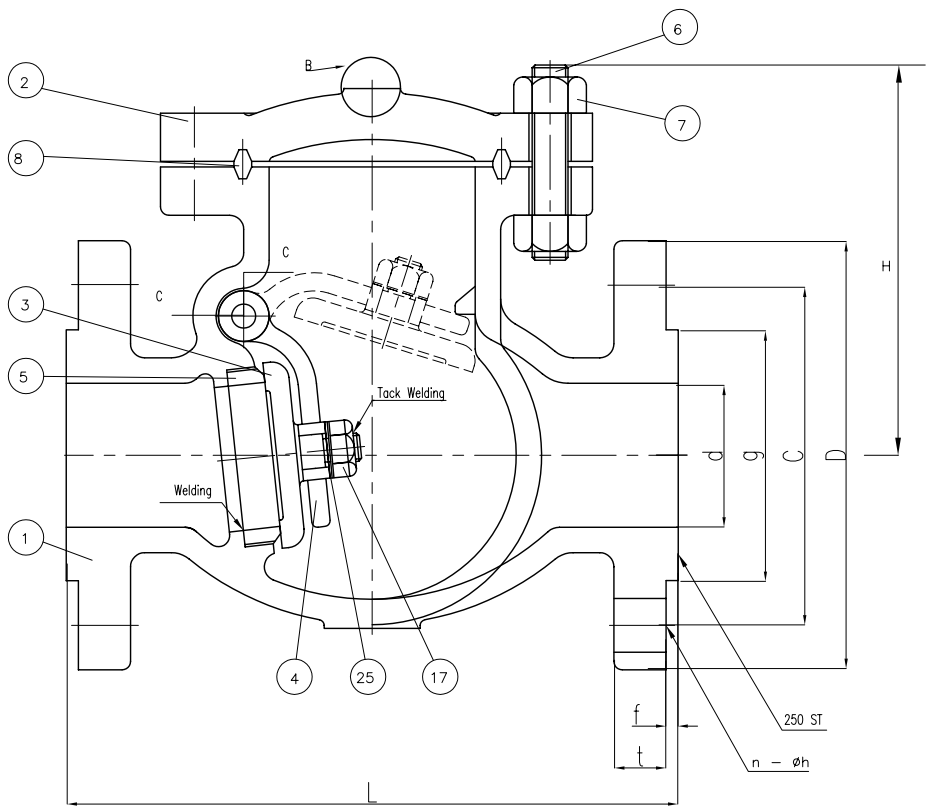


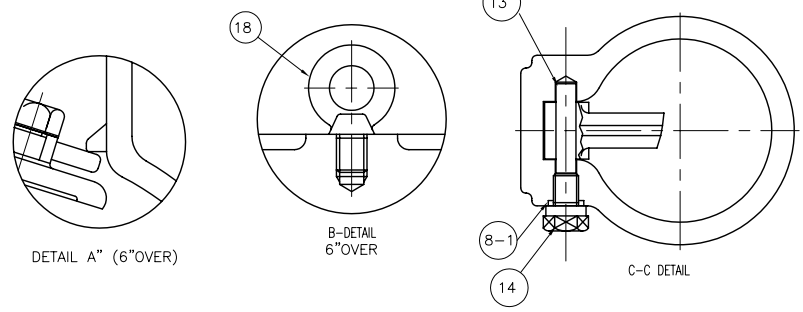
Wm. E. Williams No. 601F2 Class 600 RF Swing Check Valve ASTM A 216 WCB (API Trim 8)



BILL OF MATERIALS				
NO.	PART NAME	MATERIALS	Q'TY	
1	BODY	A216Gr WCB	1	
2	COVER	A216Gr WCB	1	
3	DISC	6" & BELOW	A217Gr CA15	1
		8" & OVER	A216Gr WCB With 13Cr Welding	
4	ARM	A216Gr WCB	1	
5	SEAT RING	A105 H,F W/CO-Cr A	1	
6	COVER BOLT	A193Gr B7	1SET	
7	COVER NUT	A194Gr 2H	1SET	
8	GASKET	P#1500	1	
8-1	PIN GASKET	P#1300	1	
13	HINGE PIN	A479Gr 410	1	
14	HINGE BOLT	A307Gr B	1	
17	DISC NUT	A194Gr 8	1	
18	EYE BOLT	A307Gr B	1	
25	WASHER	STEEL	1	

UNIT: INCH

SIZE	d	L	D	C	g	t	f	n-h	H
2.00	2.00	11.50	6.50	5.00	3.62	1.00	0.250	8-0.75	11.50
2.50	2.50	13.00	7.50	5.875	4.12	1.12	0.250	8-0.87	13.00
3.00	3.00	14.00	8.25	6.625	5.00	1.25	0.250	8-0.87	14.00
4.00	4.00	17.00	10.75	8.500	6.25	1.50	0.250	8-1.00	17.00
5.00	5.00	20.00	13.00	10.50	7.32	1.75	0.250	8-1.12	20.00
6.00	6.00	22.00	14.00	11.50	8.50	1.88	0.250	12-1.12	22.00
8.00	7.88	26.00	16.50	13.75	10.63	2.19	0.250	12-1.25	26.00
10.00	9.75	31.00	20.00	17.00	12.75	2.50	0.250	16-1.37	31.00
12.00	11.75	33.00	22.00	19.25	15.00	2.62	0.250	20-1.37	33.00
14.00	12.88	35.00	23.75	20.75	16.25	2.75	0.250	20-1.50	35.00
16.00	14.75	39.00	27.00	23.75	18.50	3.00	0.250	20-1.62	39.00
18.00	16.50	43.00	29.25	25.75	21.00	3.25	0.250	20-1.75	43.00
20.00	18.25	47.00	32.00	28.50	23.00	3.50	0.250	20-1.75	47.00
24.00	22.00	55.00	37.00	33.00	27.25	4.00	0.250	24-2.00	55.00



NO.	DATE	DESCRIPTION	PRP'D	REV'D	APP'D	DESIGNED	API 600, ANSI B16.34
△						MARKING SYSTEM	MSS-SP-25
△		RECHECKED DIM				DIM.OF FLANGE	ANSI B16.5
△		ISSUED FOR PROPOSAL				FACE TO FACE	ANSI B16.10
						WALL THICKNESS	API 600
						INSPECTION & TEST:	API 598
							HYDRO 5515PSI
							SEAT HYDRO 4100PSI
							BACK SEAT HYDRO



TITLE				CAST STEEL SWING CHECK VALVE CLASS 600 B,C R,F			
SCALE	Fig #	DRAWING NO.	REV.				
NONE	601F2	60SC060144	01				