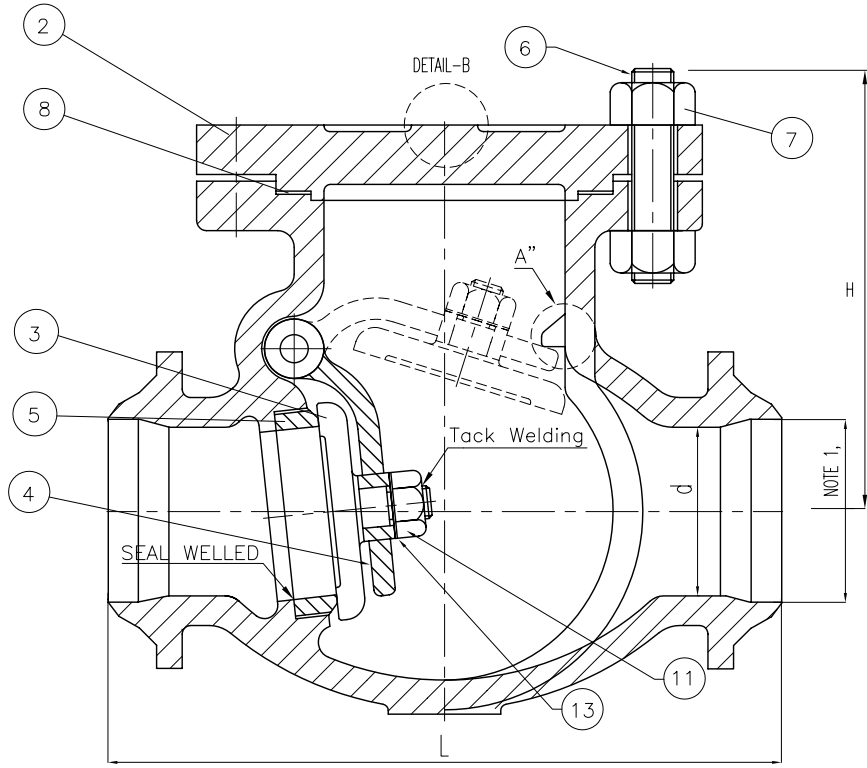


Wm. E. Williams No. 301W2 Class 300 BW Swing Check Valve ASTM A216 WCB

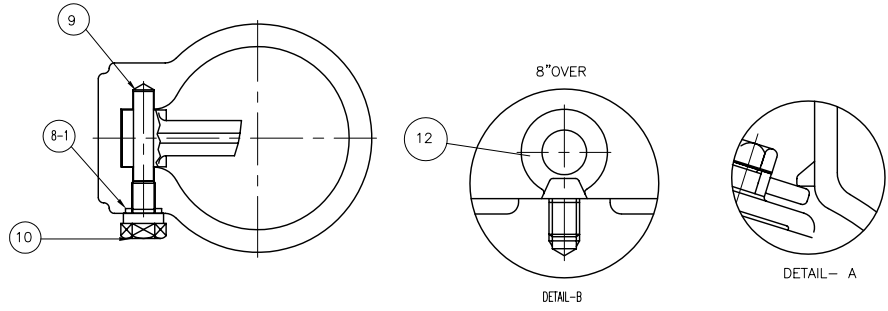


BILL OF MATERIALS				
NO.	PART NAME	MATERIALS	Q'TY	
1	BODY	A216Gr WCB	1	
2	COVER	A216Gr WCB	1	
3	DISC	6" & BELOW	A217 Gr CA15	1
		8" & OVER	A216Gr WCB With Cr13 OVERLAY	
4	ARM	A216Gr WCB	1	
5	SEAT RING	A105 H/F CO-Cr A	1	
6	COVER BOLT	A193Gr B7	1SET	
7	COVER NUT	A194Gr 2H	1SET	
8	GASKET	P#1400G	1	
8-1	PIN GASKET	P#1300	1	
9	HINGE PIN	A479Gr 410	1	
10	HINGE BOLT	A193Gr B7	1	
11	DISC NUT	A194Gr 2H	1	
12	EYE BOLT	A193Gr B7	1	
13	WASHER	STEEL	1	

NOTE:
 1. SPECIFY PIPE SCHEDULE No. REQUIRED.
 2. TRIM #2, (API #8), OTHER TRIMS AVAILABLE

UNIT: INCH

SIZE	d	L	H
2.00	2.00	10.50	7.40
2.50	2.50	11.50	8.46
3.00	3.00	12.50	9.25
4.00	4.00	14.00	9.96
5.00	5.00	15.75	10.55
6.00	6.00	17.50	10.67
8.00	8.00	21.00	12.56
10.00	10.00	24.50	16.02
12.00	12.00	28.00	17.72
14.00	13.25	33.00	20.00
16.00	15.25	34.00	22.28
18.00	17.00	38.50	23.94
20.0 0	19.00	40.00	25.39
24.00	23.00	53.00	29.02



MARKING SYSTEM	MSS-SP-25	INSPECTION & TEST:	API 598
DIM.OF FLANGE	ANSI B16.5	SHELL	HYDRO 450PSI
FACE TO FACE	ANSI B16.10	SEAT	HYDRO 315 PSI
WALL THICKNESS	API 600	BACK SEAT	HYDRO
DESIGNED	API 600, ANSI B16.34		

▲					
▲					
▲	ISSUED FOR PROPOSAL				
NO.	DATE	DESCRIPTION	PRP'D	REV'D	APP'D
TITLE CAST STEEL SWING CHECK VALVE CLASS 300 B,C .BUTTWELDED END					
SCALE	Fig #	DRAWING NO.			
NONE	301W-2	60SC060141			
					REV. 01