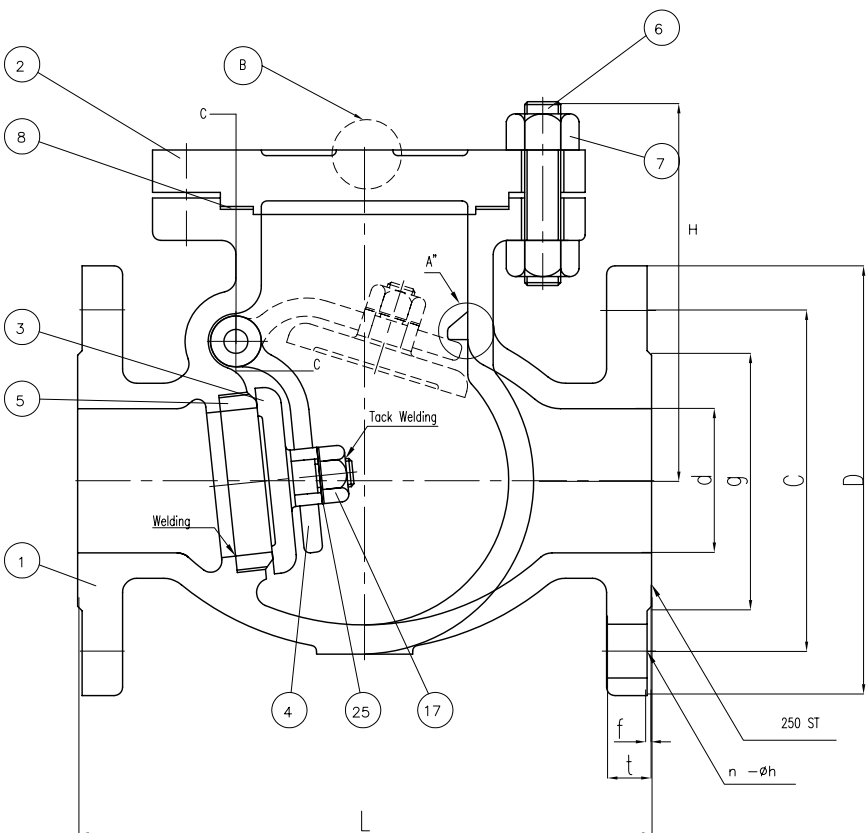


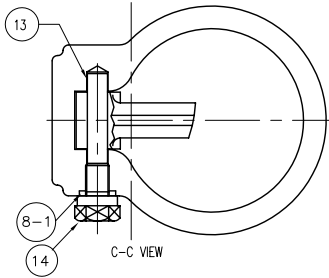
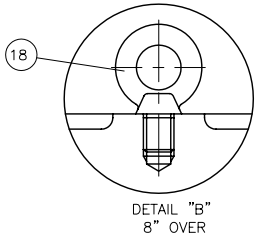
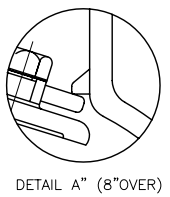
Wm. E. Williams No. 301F2 Class 300 RF Swing Check Valve ASTM A 216 WCB (API Trim 8)



| BILL OF MATERIALS | | | | |
|-------------------|------------|-----------------|--------------------------|--|
| NO. | PART NAME | MATERIALS | Q'TY | |
| 1 | BODY | A216Gr WCB | 1 | |
| 2 | COVER | A216Gr WCB | 1 | |
| 3 | DISC | 6" & BELOW | A217Gr CA15 | |
| | | 8" & OVER | A216 GR WCB W/13Cr FACED | |
| 4 | ARM | A216Gr WCB | 1 | |
| 5 | SEAT RING | A105 H/F CO-CrA | 1 | |
| 6 | COVER BOLT | A193Gr B7 | 1SET | |
| 7 | COVER NUT | A194Gr 2H | 1SET | |
| 8 | GASKET | P#1400G | 1 | |
| 8-1 | PIN GASKET | P#1300 | 1 | |
| 13 | HINGE PIN | A479Gr 410 | 1 | |
| 14 | HINGE BOLT | A307Gr B | 1 | |
| 17 | DISC NUT | A194Gr 8 | 1 | |
| 18 | EYE BOLT | A307Gr B | 1 | |
| 25 | WASHER | STEEL | 1 | |

UNIT: INCH

| SIZE | d | L | D | C | g | t | f | n-h | H |
|--------|-------|-------|-------|-------|-------|------|-------|---------|-------|
| 2.00 | 2.00 | 10.50 | 6.50 | 5.00 | 3.62 | 0.88 | 0.060 | 8-0.75 | 7.40 |
| 2.50 | 2.50 | 11.50 | 7.50 | 5.88 | 4.12 | 1.00 | 0.060 | 8-0.87 | 8.46 |
| 3.00 | 3.00 | 12.50 | 8.25 | 6.63 | 5.00 | 1.12 | 0.060 | 8-0.87 | 9.25 |
| 4.00 | 4.00 | 14.00 | 10.00 | 7.88 | 6.19 | 1.25 | 0.060 | 8-0.87 | 9.96 |
| 5.00 | 5.00 | 15.75 | 11.00 | 9.25 | 7.31 | 1.38 | 0.060 | 8-0.87 | 10.55 |
| 6.00 | 6.00 | 17.50 | 12.50 | 10.63 | 8.50 | 1.44 | 0.060 | 12-0.87 | 10.67 |
| 8.00 | 8.00 | 21.00 | 15.00 | 13.00 | 10.62 | 1.62 | 0.060 | 12-1.00 | 12.56 |
| 10.00 | 10.00 | 24.50 | 17.50 | 15.25 | 12.75 | 1.88 | 0.060 | 16-1.12 | 16.02 |
| 12.00 | 12.00 | 28.00 | 20.50 | 17.75 | 15.00 | 2.00 | 0.060 | 16-1.25 | 17.72 |
| 14.00 | 13.25 | 33.00 | 23.00 | 20.25 | 16.25 | 2.12 | 0.060 | 20-1.25 | 20.00 |
| 16.00 | 15.25 | 34.00 | 25.50 | 22.50 | 18.50 | 2.25 | 0.060 | 20-1.37 | 22.28 |
| 18.00 | 17.00 | 38.50 | 28.00 | 24.75 | 21.00 | 2.38 | 0.060 | 24-1.37 | 23.94 |
| 20.0 0 | 19.00 | 40.00 | 30.50 | 27.00 | 23.00 | 2.50 | 0.060 | 24-1.37 | 25.39 |
| 24.00 | 23.00 | 53.00 | 36.00 | 32.00 | 27.25 | 2.75 | 0.060 | 24-1.62 | 29.02 |



| | | | | | | | | | |
|-----|------|---------------------|-------|-------|----------------|-------------|----------------------------|-------|---------|
| △ | | | | | MARKING SYSTEM | MSS-SP-25 | INSPECTION & TEST: API 598 | | |
| △ | | RECHECKED DIM | | | DIM.OF FLANGE | ANSI B16.5 | SHELL | HYDRO | 1125PSI |
| △ | | ISSUED FOR PROPOSAL | | | FACE TO FACE | ANSI B16.10 | SEAT | HYDRO | 825PSI |
| | | | | | WALL THICKNESS | API 600 | BACK SEAT | HYDRO | |
| NO. | DATE | DESCRIPTION | PRP'D | REV'D | APP'D | DESIGNED | API 600, ANSI B16.34 | | |

WILLIAMS
VALVE CORPORATION

| | | | | | | | |
|-------|-------|-------------|--|---|---|------|--|
| TITLE | | | | CAST STEEL SWING CHECK VALVE CLASS 300 B,C,R,F | | | |
| SCALE | Fig # | DRAWING NO. | | ⊕ | ◁ | REV. | |
| NONE | 301F2 | 60SC060140 | | | | 01 | |