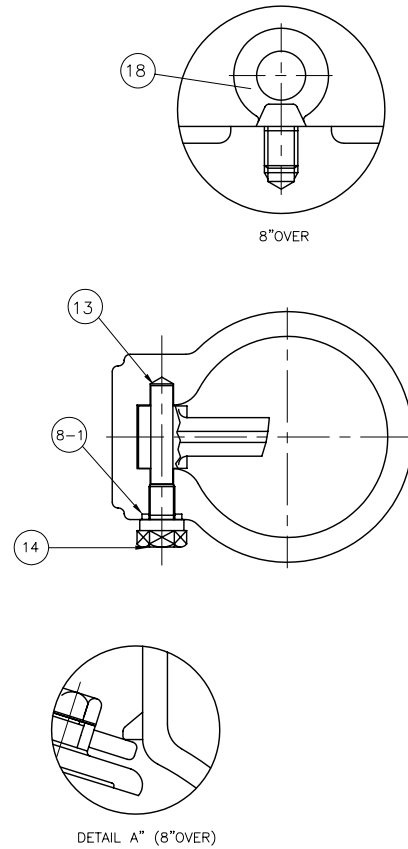
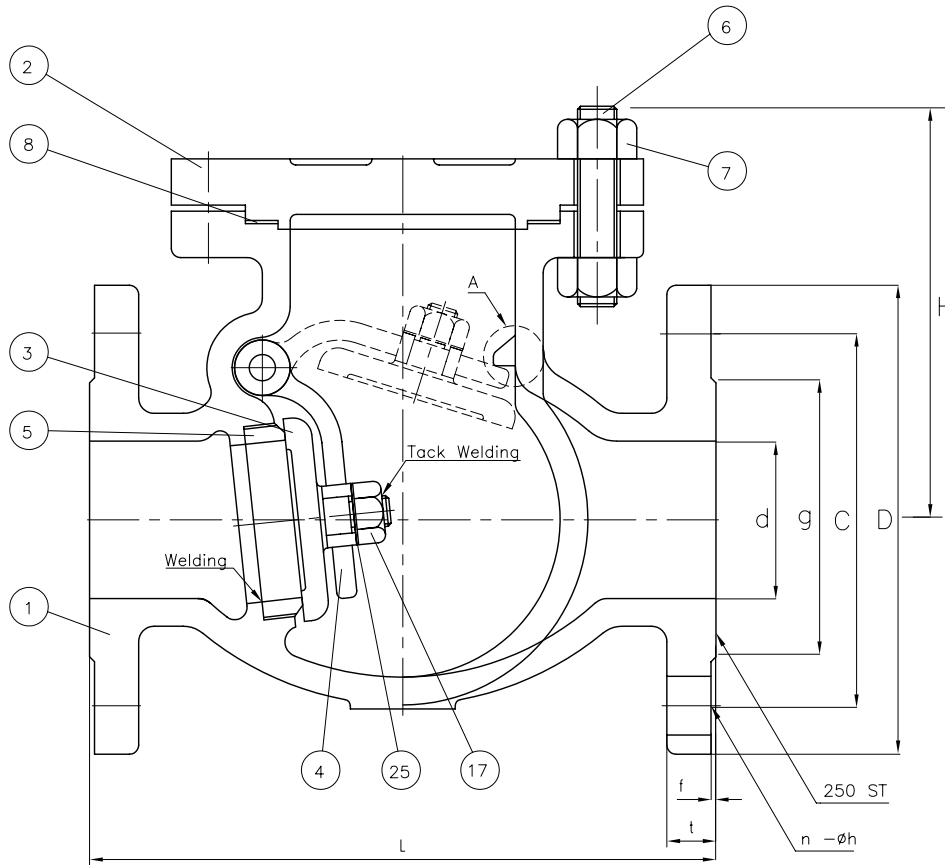


# Wm. E. Williams No. 151F4 Class 150 RF Swing Check Valve ASTM A 216 WCB (Bronze Trim)



BILL OF MATERIALS				
NO.	PART NAME	MATERIALS	Q'TY	
1	BODY	A216Gr WCB	1	
2	COVER	A216Gr WCB	1	
3	DISC	6" & BELOW	A217Gr CA15 With BC Welding	1
		8" & OVER	A216Gr WCB With BC Welding	
4	ARM	A216Gr WCB	1	
5	SEAT RING	A105 With BC Welding	1	
6	COVER BOLT	A193Gr B7	1SET	
7	COVER NUT	A194Gr 2H	1SET	
8	GASKET	P#1400G	1	
8-1	PIN GASKET	P#1300	1	
13	HINGE PIN	A479Gr 410	1	
14	HINGE BOLT	A307Gr B	1	
17	DISC NUT	A194Gr 8	1	
18	EYE BOLT	A307Gr B	1	
25	WASHER	STEEL	1	

UNIT: INCH

SIZE	d	L	D	C	g	t	f	n-h	H
2.00	2.00	8.00	6.00	4.75	3.625	0.63	0.060	4-0.75	5.55
2.50	2.50	8.50	7.00	5.50	4.125	0.69	0.060	4-0.75	6.50
3.00	3.00	9.50	7.50	6.00	5.000	0.75	0.060	4-0.75	7.00
4.00	4.00	11.50	9.00	7.50	6.187	0.94	0.060	8-0.75	8.30
5.00	5.00	13.00	10.00	8.50	7.320	0.94	0.060	8-0.87	8.58
6.00	6.00	14.00	11.00	9.50	8.500	1.00	0.060	8-0.87	8.94
8.00	8.00	19.50	13.50	11.75	10.62	1.13	0.060	8-0.87	11.57
10.00	10.00	24.50	16.00	14.25	12.75	1.19	0.060	12-1.00	14.00
12.00	12.00	27.50	19.00	17.00	15.00	1.25	0.060	12-1.00	16.30
14.00	13.25	31.00	21.00	18.75	16.25	1.38	0.060	12-1.12	18.97
16.00	15.25	34.00	23.50	21.25	18.50	1.44	0.060	16-1.12	19.37
18.00	17.25	38.50	25.00	22.75	21.00	1.57	0.060	16-1.25	19.80
20.00	19.25	38.50	27.50	25.00	23.00	1.69	0.060	20-1.12	21.30
24.00	23.25	51.00	32.00	29.50	27.25	1.88	0.060	20-1.37	26.58

△					
△		RECHECKED DIM			
△		ISSUED FOR PROPOSAL			
NO.	DATE	DESCRIPTION	PRP'D	REV'D	APP'D
MARKING SYSTEM MSS-SP-25    INSPECTION & TEST: API 598 DIM. OF FLANGE ANSI B16.5    SHELL HYDRO 450PSI FACE TO FACE ANSI B16.10    SEAT HYDRO 315 PSI WALL THICKNESS API 600    BACK SEAT HYDRO DESIGNED API 600, ANSI B16.34					
TITLE		CAST STEEL SWING CHECK VALVE CLASS 150 B,C,R,F, Bronze Trim			
SCALE	Fig #	DRAWING NO.			REV.
NONE	151F4	60SC060133			01