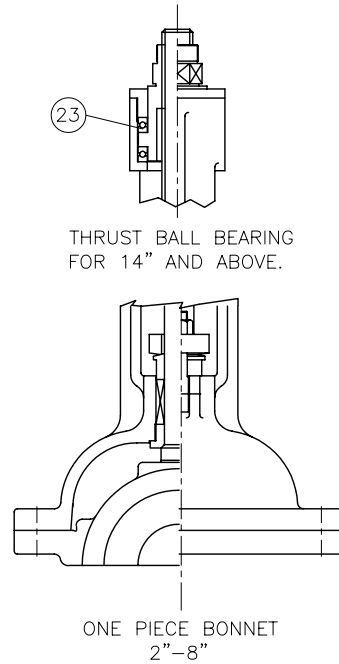
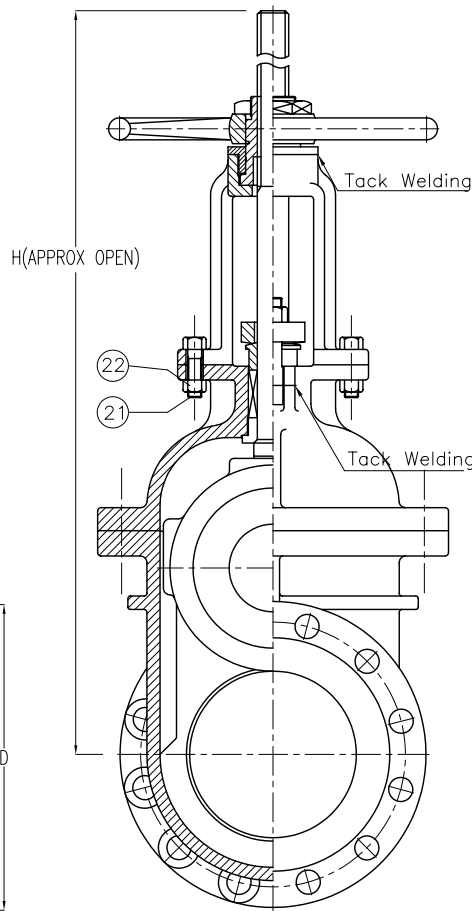
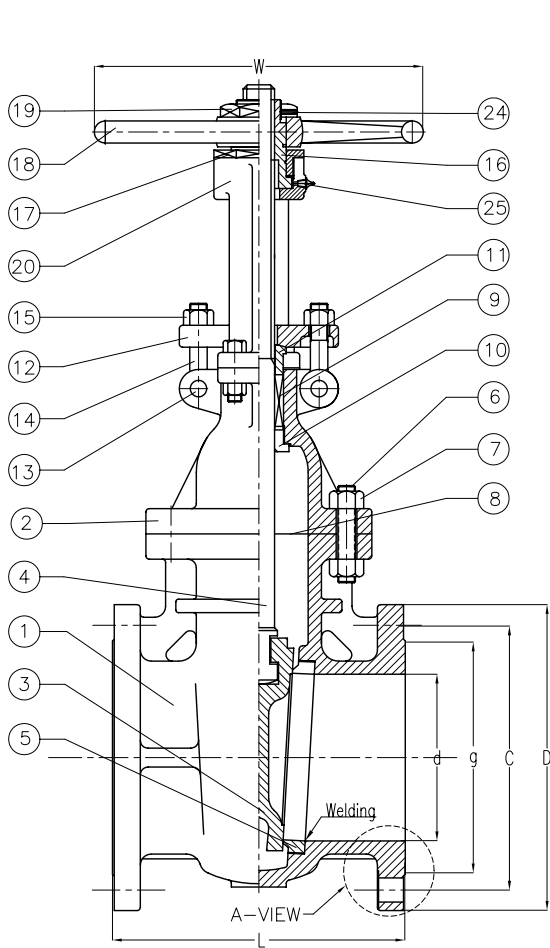


# Wm. E. Williams No. 15F2 Class 150 RF OS&Y Gate Valve ASTM A 216 WCB (API Trim 8)

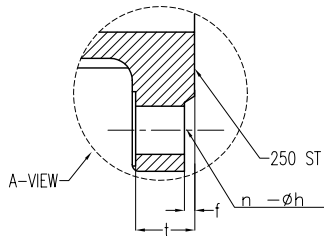


MATERIAL SPECIFICATION				
NO.	PART NAME	MATERIALS	Q'TY	
1	BODY	A216Gr WCB	1	
2	BONNET	A216Gr WCB	1	
3	DISC	2"-6" 8"&OVER	A217 CA15 A216GR WCB W/13CrFACED	1
4	STEM	A479 Gr410 (13Cr)	1	
5	SEAT RING	A105 H/F CO-CrA	2	
6	BONNET BOLT	A193Gr B7	1SET	
7	BONNET NUT	A194Gr 2H	1SET	
8	GASKET	P#1400G	1	
9	PACKING	P#6610+P#6528	1SET	
10	BACK SEAT	A479 Gr 410	1	
11	GLAND RING	A479 Gr 410	1	
12	GLAND FLANGE	A105 or WCB	1	
13	HINGE PIN	A105 or 410	2	
14	GLAND BOLT	A307Gr B	2	
15	GLAND NUT	A307Gr B	2	
16	YOKE SLEEVE	A439Gr D2C	1	
17	SLEEVE NUT	A479Gr 410 or WCB	1	
18	HAND WHEEL	A197	1	
19	HANDLE NUT	A479Gr 410 or WCB	1	
20	YOKE	A216Gr WCB	1	
21	YOKE BOLT	A307Gr B	4	
22	YOKE NUT	A307Gr B	4	
23	BEARING	STEEL	2	
24	SET SCREW	STEEL	1	
25	GREASE NIPPLE	STEEL	1	

UNIT: INCH

SIZE	d	L	D	C	g	t	f	n-h	H	W
2.00	2.00	7.00	6.00	4.75	3.63	0.63	0.060	4-0.75	15.75	7.00
2.50	2.50	7.50	7.00	5.55	4.13	0.69	0.060	4-0.75	16.75	7.00
3.00	3.00	8.00	7.50	6.00	5.00	0.75	0.060	4-0.75	21.12	9.82
4.00	4.00	9.00	9.00	7.50	6.18	0.94	0.060	8-0.75	22.37	10.50
5.00	5.00	10.00	10.00	8.50	7.32	0.94	0.060	8-0.87	26.37	10.50
6.00	6.00	10.50	11.00	9.50	9.50	1.00	0.060	8-0.87	31.22	12.00
8.00	8.00	11.50	13.50	11.75	10.63	1.13	0.060	8-0.87	38.85	15.00
10.00	10.00	13.00	16.00	14.25	12.75	1.19	0.060	12-1.00	46.88	15.75
12.00	12.00	14.00	19.00	17.00	15.00	1.25	0.060	12-1.00	54.29	17.71
14.00	13.25	15.00	21.00	18.75	16.25	1.38	0.060	12-1.12	66.88	22.00
16.00	15.25	16.00	23.50	21.25	18.50	1.44	0.060	16-1.12	71.25	22.00
18.00	17.25	17.00	25.00	22.75	21.00	1.56	0.060	16-1.25	80.70	23.62
20.00	19.25	18.00	27.00	25.00	23.00	1.69	0.060	20-1.25	83.85	25.60
24.00	23.25	20.00	32.00	29.50	27.25	1.88	0.060	20-1.37	103.5	25.60

\*Larger sizes available.



TITLE		CAST STEEL GATE VALVE CLASS 150 R,F B,B OS&Y		
SCALE	Fig #	DRAWING NO.		
NONE	15F2	60GA060113		
				REV. 01

△					MARKING SYSTEM	MSS-SP-25	INSPECTION & TEST: API 598
△					DIM.OF FLANGE	ANSI B16.5	SHELL HYDRO 450PSI
△					FACE TO FACE	ANSI B16.10	SEAT AIR 80PSI
△					WALL THICKNESS	API 600	BACK SEAT HYDRO 315 PSI
NO.	DATE	DESCRIPTION	PRP'D	REV'D	APP'D	DESIGNED	API 600, ANSI B16.34