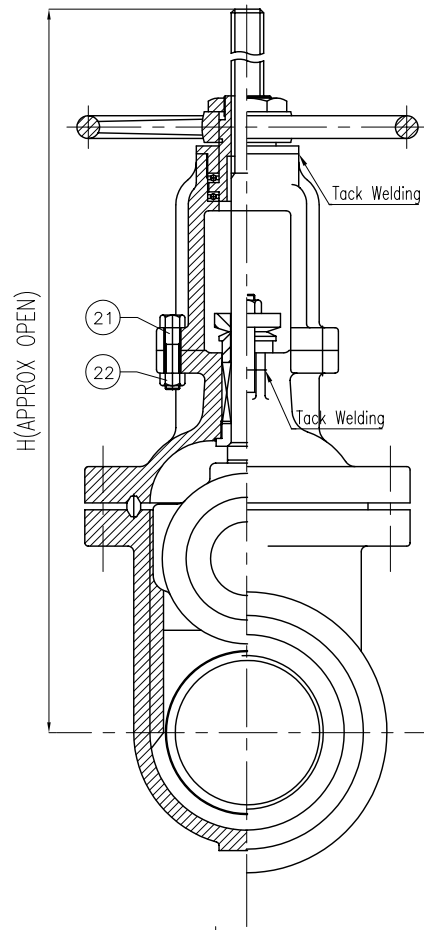
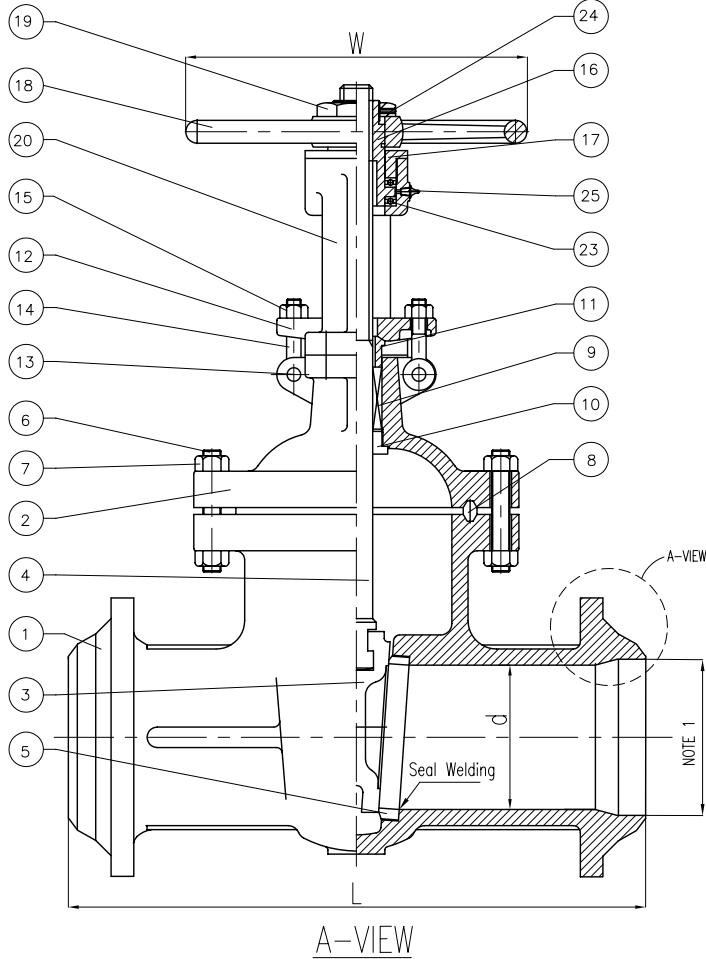
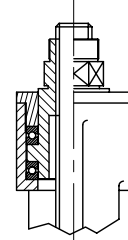
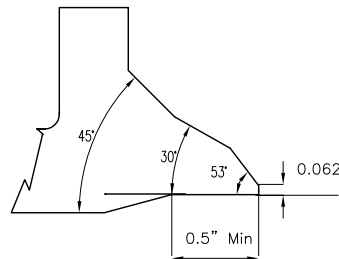


Wm. E. Williams No. 60W2 Class 600 BW OS&Y Gate Valve ASTM A 216 WCB (API Trim 8)

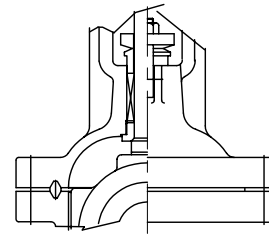


UNIT: INCH

SIZE	d	L	H	W
2.00	2.00	11.50	16.35	8.82
2.50	2.50	13.00	19.37	8.82
3.00	3.00	14.00	21.30	10.25
4.00	4.00	17.00	26.62	11.81
5.00	5.00	20.00	32.50	14.00
6.00	6.00	22.00	35.60	15.75
8.00	7.88	26.00	44.92	17.71
10.00	9.75	31.00	50.95	23.63
12.00	11.75	33.00	63.75	23.63
14.00	12.88	35.00	69.37	25.59
16.00	14.75	39.00	78.15	25.59
18.00	16.50	43.00	87.16	27.55
20.00	18.25	47.00	96.88	31.50
24.00	22.00	55.00	110.62	37.40



THRUST BALL BEARING FOR 6" AND ABOVE



ONE PIECE BONNET 2"-8"

BILL OF MATERIALS				
NO.	PART NAME	MATERIALS	Q'TY	
1	BODY	A216Gr WCB	1	
2	BONNET	A216Gr WCB	1	
3	DISC	2"-6"	A217 Gr CA15	1
		8"& ABOVE	A216 Gr WCB W/13Cr FACED	1
4	STEM	A479Gr 410	1	
5	SEAT RING	A105 H/F CO-CrA	2	
6	BONNET BOLT	A193Gr B7	1SET	
7	BONNET NUT	A194Gr 2H	1SET	
8	GASKET	P#1500	1	
9	PACKING	P#6610+P#6528	1SET	
10	BACK SEAT	A479Gr 410	1	
11	GLAND RING	A479Gr 410	1	
12	GLAND FLANGE	A105 or WCB	1	
13	HINGE PIN	A105 or 410	2	
14	GLAND BOLT	A307Gr B	2	
15	GLAND NUT	A307Gr B	2	
16	YOKE SLEEVE	A439Gr D2C	1	
17	SLEEVE NUT	A479Gr 410 or WCB	1	
18	HAND WHEEL	A197	1	
19	HANDLE NUT	A479Gr 410 or WCB	1	
20	YOKE	A216Gr WCB	1	
21	YOKE BOLT	A307Gr B	4	
22	YOKE NUT	A307Gr B	4	
23	BEARING	STEEL	2	
24	SET SCREW	STEEL	1	
25	GREASE NIPPLE	STEEL	1	

NOTE:
 1. SPECIFY PIPE SCHEDULE No. REQUIRED.
 2. TRIM #2, (API #8), OTHER TRIMS AVAILABLE



WILLIAMS
VALVE CORPORATION

NO.	DATE	DESCRIPTION	PRP'D	REV'D	APP'D	MARKING SYSTEM	MSS-SP-25	INSPECTION & TEST: API 598	TITLE	SCALE	Fig #	DRAWING NO.	REV.
						BUTTWELD END	ANSI B16.25	SHELL HYDRO	CAST STEEL GATE VALVE CLASS 600 B,B OS&Y BUTTWELD END	NONE	60W-2	60GA06104	01
					FACE TO FACE	ANSI B16.10	SEAT AIR	2225PSI 80PSI					
					WALL THICKNESS	API 600	BACK SEAT HYDRO	1650PSI					
					DESIGNED	API 600, ANSI B16.34							