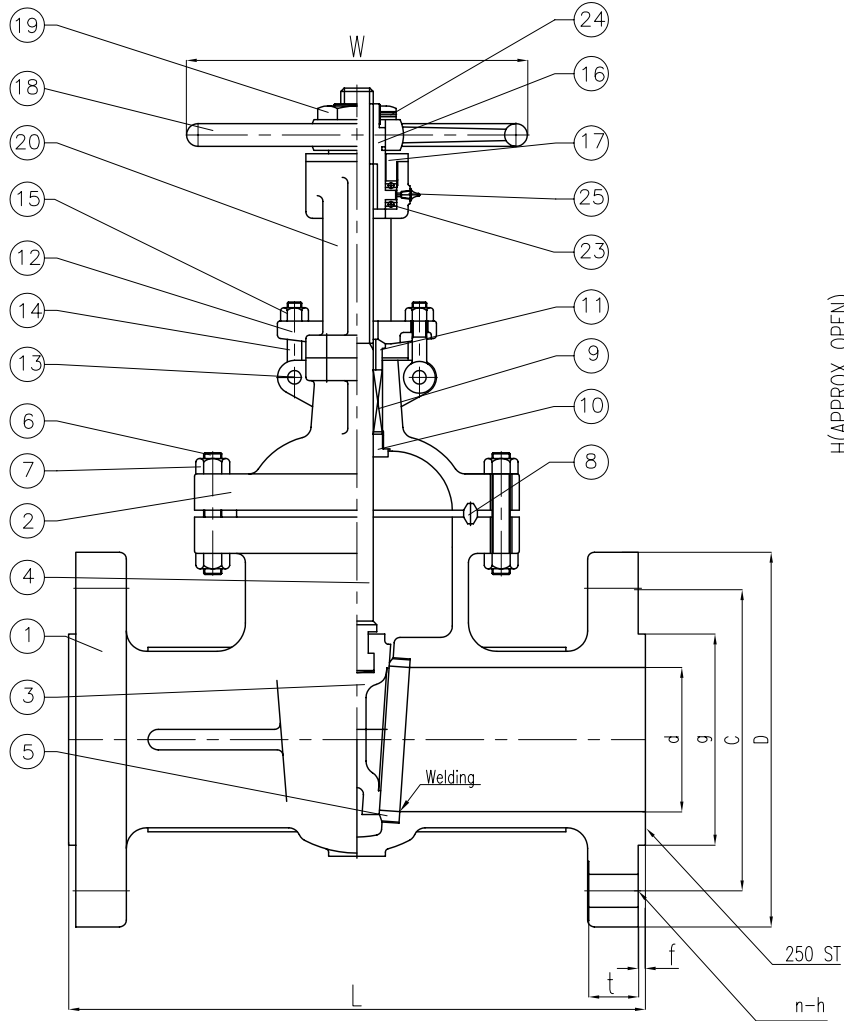
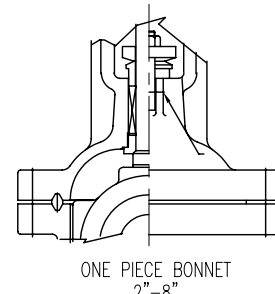
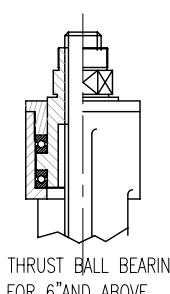
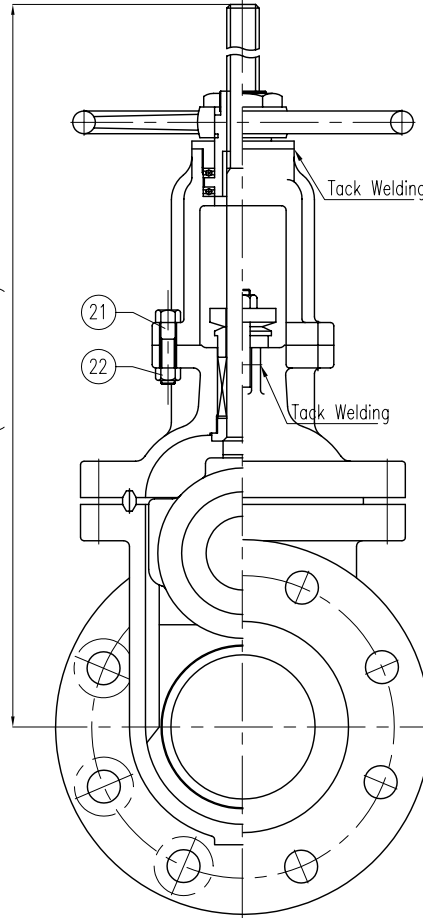


Wm. E. Williams No. 60F2 Class 600 RF OS&Y Gate Valve ASTM A 216 WCB (API Trim 8)



H (APPROX OPEN)



| BILL OF MATERIALS | | | |
|-------------------|---------------|---|------|
| NO. | PART NAME | MATERIALS | Q'TY |
| 1 | BODY | A216Gr WCB | 1 |
| 2 | BONNET | A216Gr WCB | 1 |
| 3 | DISC | 2"-6" A217 Gr CA15 8"&ABOVE A216 Gr WCB W/13Cr FACED | 1 |
| 4 | STEM | A479Gr 410 | 1 |
| 5 | SEAT RING | A105 H/F CO-CrA | 2 |
| 6 | BONNET BOLT | A193Gr B7M | 1SET |
| 7 | BONNET NUT | A194Gr 2HM | 1SET |
| 8 | GASKET | P#1500 | 1 |
| 9 | PACKING | P#6610+P#6528 | 1SET |
| 10 | BACK SEAT | A479Gr 410 | 1 |
| 11 | GLAND RING | A479Gr 410 | 1 |
| 12 | GLAND FLANGE | A105 or WCB | 1 |
| 13 | HINGE PIN | A105 or 410 | 2 |
| 14 | GLAND BOLT | A307Gr B | 2 |
| 15 | GLAND NUT | A307Gr B | 2 |
| 16 | YOKE SLEEVE | A439Gr D2C | 1 |
| 17 | SLEEVE NUT | A479Gr 410 or WCB | 1 |
| 18 | HAND WHEEL | A197 | 1 |
| 19 | HANDLE NUT | A479Gr 410 or WCB | 1 |
| 20 | YOKE | A216Gr WCB | 1 |
| 21 | YOKE BOLT | A307Gr B | 4 |
| 22 | YOKE NUT | A307Gr B | 4 |
| 23 | BEARING | STEEL | 2 |
| 24 | SET SCREW | STEEL | 1 |
| 25 | GREASE NIPPLE | STEEL | 1 |

UNIT: INCH

| SIZE | d | L | D | C | q | t | f | n-h | H | W |
|-------|-------|-------|-------|-------|-------|------|-------|---------|--------|-------|
| 2.00 | 2.00 | 11.50 | 6.50 | 5.00 | 3.62 | 1.00 | 0.250 | 8-0.75 | 16.35 | 8.82 |
| 2.50 | 2.50 | 13.00 | 7.50 | 5.875 | 4.12 | 1.12 | 0.250 | 8-0.87 | 19.37 | 8.82 |
| 3.00 | 3.00 | 14.00 | 8.25 | 6.625 | 5.00 | 1.25 | 0.250 | 8-0.87 | 21.30 | 10.25 |
| 4.00 | 4.00 | 17.00 | 10.75 | 8.500 | 6.25 | 1.50 | 0.250 | 8-1.00 | 26.62 | 11.81 |
| 5.00 | 5.00 | 20.00 | 13.00 | 10.50 | 7.32 | 1.75 | 0.250 | 8-1.12 | 32.50 | 14.00 |
| 6.00 | 6.00 | 22.00 | 14.00 | 11.50 | 8.50 | 1.88 | 0.250 | 12-1.12 | 35.60 | 15.75 |
| 8.00 | 7.88 | 26.00 | 16.50 | 13.75 | 10.63 | 2.19 | 0.250 | 12-1.25 | 44.92 | 17.71 |
| 10.00 | 9.75 | 31.00 | 20.00 | 17.00 | 12.75 | 2.50 | 0.250 | 16-1.37 | 50.95 | 23.63 |
| 12.00 | 11.75 | 33.00 | 22.00 | 19.25 | 15.00 | 2.62 | 0.250 | 20-1.37 | 63.75 | 23.63 |
| 14.00 | 12.88 | 35.00 | 23.75 | 20.75 | 16.25 | 2.75 | 0.250 | 20-1.50 | 69.37 | 25.59 |
| 16.00 | 14.75 | 39.00 | 27.00 | 23.75 | 18.50 | 3.00 | 0.250 | 20-1.62 | 78.15 | 25.59 |
| 18.00 | 16.50 | 43.00 | 29.25 | 25.75 | 21.00 | 3.25 | 0.250 | 20-1.75 | 87.16 | 27.55 |
| 20.00 | 18.25 | 47.00 | 32.00 | 28.50 | 23.00 | 3.50 | 0.250 | 20-1.75 | 96.88 | 31.50 |
| 24.00 | 22.00 | 55.00 | 37.00 | 33.00 | 27.25 | 4.00 | 0.250 | 24-2.00 | 110.62 | 37.40 |

| | | |
|----------------|----------------------|----------------------------|
| MARKING SYSTEM | MSS-SP-25 | INSPECTION & TEST: API 598 |
| DIM. OF FLANGE | ANSI B16.5 | SHELL HYDRO 2225PSI |
| FACE TO FACE | ANSI B16.10 | SEAT AIR 80PSI |
| WALL THICKNESS | API 600 | BACK SEAT HYDRO 1650PSI |
| DESIGNED | API 600, ANSI B16.34 | |

| | | | | | |
|-------|---------------------|---|-------|-------|-------|
| △ | | | | | |
| △ | Rechecked Dim | | | | |
| △ | ISSUED FOR PROPOSAL | | | | |
| NO. | DATE | DESCRIPTION | PRP'D | REV'D | APP'D |
| | | WILLIAMS VALVE CORPORATION | | | |
| | | TITLE CAST STEEL GATE VALVE CLASS 600 R.F.B.B OS&Y | | | |
| SCALE | Fig # | DRAWING NO. | REV. | | |
| NONE | 60F-2 | 60GA060102 | 01 | | |