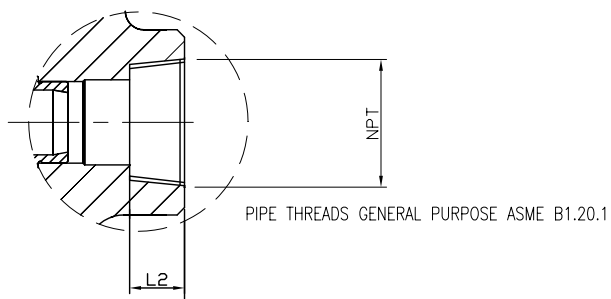


Performance Standard

| | | | |
|----------------|----------------|-----------|-----|
| Class | | 1500 LB | |
| Test Pre-ssure | Shell Test | 20 | MPa |
| | Back Seal Test | | |
| | Seal Test | 14.2 | |
| | Air Test | 0.6 | |
| Suitable Temp. | | -29~425°C | |
| Suitable Media | | W.O.G etc | |

BILL OF MATERIAL

| | | |
|-----|--------------|-----------------------|
| 17 | SEAT RING | A105N w/STL FACE |
| 16 | WASHER | A105N |
| 15 | H/W NUT | A194 2H |
| 14 | HAND WHEEL | A179 |
| 13 | STEM NUT | A276 GR 420 |
| 12 | NUT | A194 2H |
| 11 | GLAND FLANGE | A105N |
| 10 | EYE BOLT | A193 B7 |
| 9 | GLAND | 420 |
| 8 | PIN | 420 |
| 7 | PACKING | GRAPHITE |
| 6 | SCREW | A194 2H |
| 5 | BONNET | A105N |
| 4 | GASKET | 304+FLEXIBLE GRAPHITE |
| 3 | STEM | A479 GR 410 |
| 2 | DISC | A479 GR 410 |
| 1 | Body | A105N |
| No. | PART NAME | MATERIAL |



Technical Requirements

- Design & manufacture conform with API 602
- Test & Inspect conform with API 598

UNIT: INCH

| SIZE | L | B | øD | øW | H |
|--------|------|------|------|------|-------|
| 1/2" | 4.37 | 0.38 | 0.86 | 4.92 | 8.15 |
| 3/4" | 4.37 | 0.50 | 1.07 | 4.92 | 8.15 |
| 1" | 4.72 | 0.50 | 1.33 | 6.30 | 9.45 |
| 1-1/4" | 5.98 | 0.50 | 1.68 | 6.30 | 10.16 |
| 1-1/2" | 6.30 | 0.50 | 1.92 | 7.09 | 13.00 |
| 2" | 6.77 | 0.62 | 2.41 | 7.97 | 13.98 |

| | | | | | |
|-----------------|--------------|----------------------------|-------|-------|-------|
| △ | | | | | |
| △ | | | | | |
| NO. | DATE | DESCRIPTION | PRP'D | REV'D | APP'D |
| MARKING SYSTEM | | INSPECTION & TEST: API 598 | | | |
| PIPE THREAD END | ASME B1.20.1 | SHELL | HYDRO | | |
| SOCKET WELD DIM | ASME B16.11 | SEAT | HYDRO | | |
| END TO END | ASME B16.11 | MATERIAL | A105N | | |
| DESIGNED | API 602 | SCALE | NONE | | |



WILLIAMS
VALVE CORPORATION

TITLE FORGED STEEL GLOBE VALVE

| | | | |
|------|----------------------------------|---------|------|
| SIZE | Fig #F1502SW-API8-A105N <SOCKET> | CLASS | REV. |
| | #F1502T-API8-A105N <THREADED> | 1500 LB | |