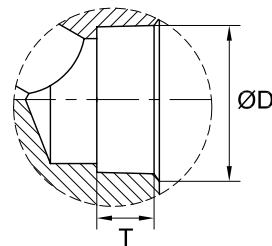


Detail "A"  
SCREWED ENDS (NPT)  
TO ANSI/ASME B1.20.1



Detail "B"  
SOCKET WELD ENDS  
TO ASME B16.11

**BILL OF MATERIALS**

NO.	PART NAME	MATERIALS	Q'TY	NOTES
1	Body	A105N+HF	1	
2	DISC	A479 GR 410	1	
3	STEM	A479 GR 410	1	
4	GASKET	304+FLEXIBLE GRAPHITE	1 SET	
5	BONNET	A105N	1	
6	SCREW	A194 2H	1 SET	
7	PACKING	GRAPHITE	1 SET	
8	PIN	420	2	
9	GLAND	420	1	
10	EYE BOLT	A193 B7	2	
11	GLAND FLANGE	A105N	1	
12	NUT	A194 2H	2	
13	STEM NUT	A276 GR 420	1	
14	HAND WHEEL	A179	1	
15	H/W NUT	A194 2H	1	
16	NAME PLATE	AL	1	

SEAT IS HF OVERLAY

UNITS: Inch, mm

SIZE NPT	L		ØW		H		ØD		T		Weight	
	Inch	mm	Inch	mm	Inch	mm	Inch	mm	Inch	mm	kg.	lb.
1/2	2.87	73	3.93	100	6.10	155	0.86	21.8	0.38	9.6	2.0	4.2
3/4	3.15	80	3.93	100	6.30	160	1.06	27.1	0.50	12.7	2.2	4.6
1	3.93	100	4.92	125	7.40	188	1.33	33.8	0.50	12.7	4.3	7.7
1 1/4	4.49	114	6.30	160	8.54	217	1.67	42.6	0.50	12.7	6.0	13.2
1 1/2	5.71	145	6.30	160	9.25	235	1.91	48.7	0.50	12.7	7.0	16.5
2	6.30	160	7.08	180	10.55	268	2.41	61.2	0.61	15.7	11.1	25.1

WILLIAM E.

WWW.WILLIAMSVALVE.COM



**WILLIAMS**  
VALVE CORPORATION

38-52 REVIEW AVENUE  
LONG ISLAND CITY, NY 11101

TEL: 718-392-1660  
FAX: 718-729-5105

TITLE: FORGED STEEL BOLTED BONNET  
GLOBE VALVE - CLASS 800

MATERIAL: A105N UNITS: Inches  
CLASS: 800 Lbs DATE: 5/18/06 SCALE: N.T.S.

INSPECTION & TEST: API 598			SIZE: 1/2~2"~800Lb	FIG. No.: F802SW-2 F802T-2
SHELL	HYDRO	2975 PSI	DRAWN BY: J.G.	
SEAT	HYDRO	2175 PSI	CHK'D & APR'D BY: R.S.	DWG No.: 38GL060037