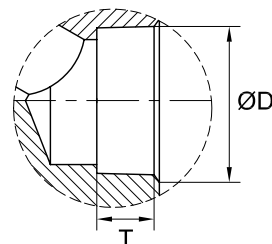


Detail "A"
SCREWED ENDS (NPT)
TO ANSI/ASME B1.20.1



Detail "B"
SOCKET WELD ENDS
TO ASME B16.11

BILL OF MATERIALS

NO.	PART NAME	MATERIALS	Q'TY	NOTES
1	Body	A182 F316+HF	1	
2	DISC	A182 F316+HF	1	
3	STEM	A182 F316	1	
4	GASKET	304+FLEXIBLE GRAPHITE	1 SET	
5	BONNET	A182 F316	1	
6	PACKING	GRAPHITE	1 SET	
7	PIN	420	2	
8	GLAND	F316	1	
9	EYE BOLT	A193 B7M	2	
10	GLAND FLANGE	A182 F316	1	
11	NUT	A194 2HM	2	
12	STEM NUT	A276 GR 420	1	
13	HAND WHEEL	A179	1	
14	H/W NUT	A194 2HM	1	
15	NAME PLATE	AL	1	

NACE TO MR 0103
SEAT IS HF OVERLAY

UNITS: mm

SIZE NPT	L		ØW		H		ØD		T		Weight		VIN #
	Inch	mm	Inch	mm	Inch	mm	Inch	mm	Inch	mm	kg.	lb.	
1/2	2.87	73	3.93	100	6.10	155	0.86	21.8	0.38	9.6	2.0	4.2	0
3/4	3.15	80	3.93	100	6.30	160	1.06	27.1	0.50	12.7	2.2	4.6	0
1	3.93	100	4.92	125	7.40	188	1.33	33.8	0.50	12.7	4.3	7.7	0
1 1/4	4.49	114	6.30	160	8.54	217	1.67	42.6	0.50	12.7	6.0	13.2	0
1 1/2	5.71	145	6.30	160	9.25	235	1.91	48.7	0.50	12.7	7.0	16.5	0
2	6.30	160	7.08	180	10.55	268	2.41	61.2	0.61	15.7	11.1	25.1	0

WILLIAM E. VALVE CORPORATION

 38-52 REVIEW AVENUE
 LONG ISLAND CITY, NY 11101
 TEL: 718-392-1660
 FAX: 718-729-5105

TITLE: FORGED STEEL WELDED BONNET
GLOBE VALVE - CLASS 800

MATERIAL: F316 UNITS: Inches
 CLASS: 800 Lbs DATE: 5/18/06 SCALE: N.T.S.

INSPECTION & TEST: API 598			SIZE: 1/2~2"~800Lb	FIG. No.:
SHELL	HYDRO	2975 PSI	DRAWN BY: J.G.	FS802SW-36N WB
SEAT	HYDRO	2175 PSI	CHK'D & APR'D BY: R.S.	DWG No.:38GL060036