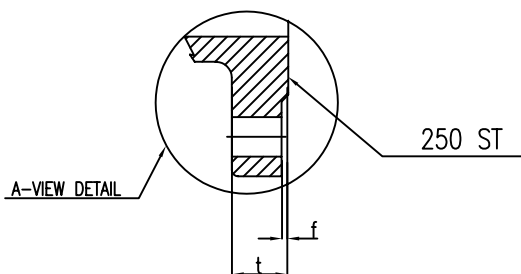
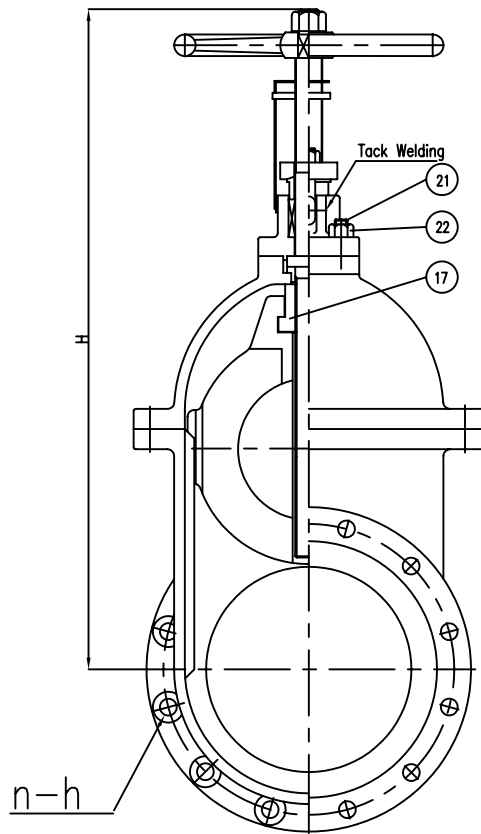
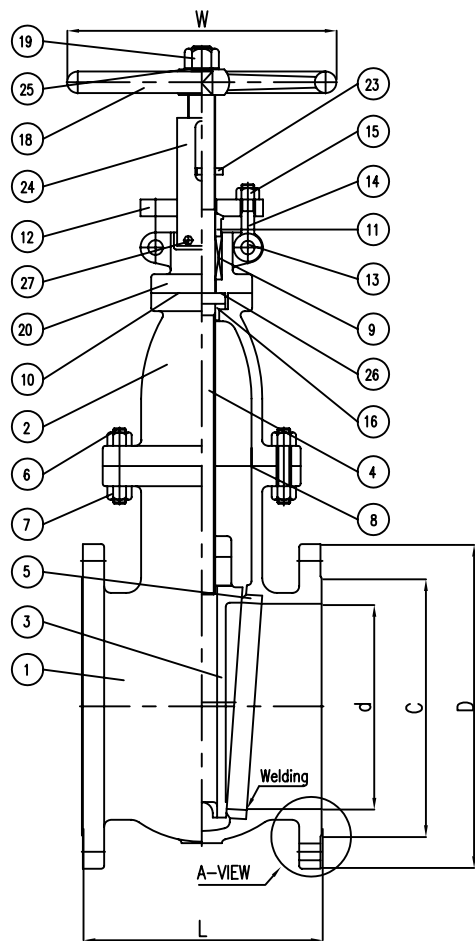


Wm. E. Williams No. N15F4 Class 150 RF OS&Y Gate Valve ASTM A 216 WCB (Bronze Trim)



BILL OF MATERIALS

NO.	PART NAME	MATERIALS	Q'TY
1	BODY	A216Gr WCB	1
2	BONNET	A216Gr WCB	1
3	DISC	6" & BELOW A217Gr CA15 WITH ASTM B62 FACED	1
		8" & OVER A216Gr WCB WITH ASTM B6 FACED	
4	STEM	BRASS ASTM B124	1
5	SEAT RING	A105 WITH ASTM B62 FACE	2
6	BONNET BOLT	A193Gr B7	1SET
7	BONNET NUT	A194Gr 2H	1SET
8	BONNET GASKET	P#1400G	1
9	PACKING	P#6610+P#6528	1SET
10	P/BOX GASKET	TBA#2100	1
11	GLAND RING	A479Gr 410	1
12	GLAND FLANGE	A105 or WCB	1
13	HINGE PIN	A105 or 410	2
14	GLAND BOLT	A307Gr B	2
15	GLAND NUT	A307Gr B	2
16	BONNET BUSH	ALUM-BRZ-148	1
17	DISC BUSH	BRONZE	1
18	HAND WHEEL	A197	1
19	HANDLE NUT	A307Gr B	1
20	PACKING BOX	A216Gr WCB	1
21	BOX BOLT	A307Gr B	4
22	BOX NUT	A307Gr B	4
23	INDICATOR	STEEL	2
24	INDICATOR PLATE	STEEL	1
25	HANDLE WASHER	STEEL	1
26	BUSH WASHER	ALUM-BRZ-B148	1
27	PLATE BOLT	A307Gr B	2

UNIT: INCH

SIZE	d	L	H	W	D	C	g	t	f	n-h
2.00	2.00	7.00	13.93	7.00	6.00	4.75	3.62	0.625	0.060	4-0.75
3.00	3.00	8.00	16.75	7.87	7.50	6.00	5.00	0.750	0.060	4-0.75
4.00	4.00	9.00	20.94	8.81	9.00	7.50	6.18	0.940	0.060	8-0.75
6.00	6.00	10.50	24.80	12.40	11.00	9.50	8.50	1.000	0.060	8-0.86
8.00	8.00	11.50	28.50	13.97	13.50	11.75	10.62	1.125	0.060	8-0.86
10.00	10.00	13.00	33.54	15.75	16.00	14.25	12.75	1.187	0.060	12-1.00
12.00	12.00	14.00	37.32	17.71	19.00	17.00	15.00	1.250	0.060	12-1.00
14.00	13.25	15.00	41.69	17.71	21.00	18.75	16.25	1.375	0.060	12-1.12
16.00	15.25	16.00	45.37	17.71	23.50	21.25	18.50	1.437	0.060	16-1.12



▲					MARKING SYSTEM	MSS-SP-25	INSPECTION & TEST: API 598			TITLE	CAST STEEL NRS GATE VALVE CLASS 150 R,F B,B		
					DIM.OF FLANGE	ANSI B16.5	SHELL	HYDRO	450PSI				
▲					FACE TO FACE	ANSI B16.10	SEAT	AIR	80PSI	SCALE	Fig #	DRAWING NO.	REV.
▲					WALL THICKNESS	API 600	BACK SEAT	HYDRO	315PSI				
NO.	DATE	DESCRIPTION	PRP'D	REV'D	APP'D	DESIGNED	API 600, ANSI B16.34						