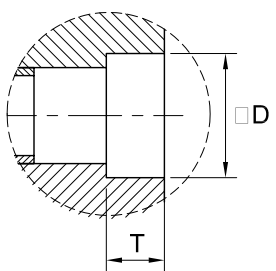


Detail "A"
SCREWED ENDS (NPT)
TO ANSI/ASME B1.20.1



Detail "B"
SOCKET WELD ENDS
TO ASME B16.11

BILL OF MATERIALS

NO.	PART NAME	MATERIALS	Q'TY	REMARKS
1	BODY	A105N	1	
2	SEAT	A105N+HF	1	
3	WEDGE	A182 F6a	1	
4	STEM	A182 F6a	1	
5	GASKET	304 + FLEXIBLE GRAPHITE	1	
6	BONNET	A105N	1	
7	PACKING	GRAPHITE	1 SET	
8	PIN	304	2	
9	GLAND	420	1	
10	GLAND EYEBOLT	A193 B7	2	
11	GLAND FLANGE	A105N	1	
12	NUT	A194 2H	2	
13	THRUST WASHER	410	2	
14	STEM NUT	410	1	
15	HANDWHEEL	A197	1	
16	NAME PLATE	AL	1	
17	H/W NUT	1035	1	

UNITS: Inch, mm

SIZE NPT	L		ØW		H		ØD		T		Weight	
	Inch	mm	Inch	mm	Inch	mm	Inch	mm	Inch	mm	kg.	lb.
1/2	2.87	73	3.93	100	5.67	144	0.86	21.8	0.38	9.6	1.7	3.7
3/4	3.15	80	3.93	100	5.90	150	1.06	27.1	0.50	12.7	2.0	4.4
1	3.93	100	4.92	125	7.08	180	1.33	33.8	0.50	12.7	3.7	8.3
1 1/4	4.49	114	6.30	160	8.50	216	1.67	42.6	0.50	12.7	5.0	11.2
1 1/2	4.72	120	6.30	160	9.25	235	1.91	48.7	0.50	12.7	6.0	13.4
2	5.12	130	7.08	180	10.63	270	2.41	61.2	0.61	15.7	10.2	22.5

WILLIAM E. VALVE CORPORATION

 38-52 REVIEW AVENUE
 LONG ISLAND CITY, NY 11101
 TEL: 718-392-1660
 FAX: 718-729-5106

TITLE: FORGED STEEL WELDED BONNET GATE VALVE - CLASS 800			
MATERIAL: A105N		UNITS: mm	
CLASS: 800 Lbs	DATE: 5/18/06	SCALE: N.T.S.	
INSPECTION & TEST: API 598		SIZE: 1/2"-2"-800Lb	
SHELL	HYDRO	2975 PSI	DRAWN BY: J.G.
SEAT	HYDRO	2175 PSI	CHK'D & APR'D BY: R.S.
REV: 01		DWG No.: 38FGA060025	