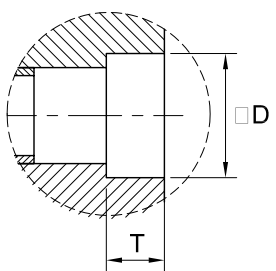


Detail "A"
SCREWED ENDS (NPT)
TO ANSI/ASME B1.20.1



Detail "B"
SOCKET WELD ENDS
TO ASME B16.11

UNITS: Inch, mm

SIZE NPT	L		ØW		H		ØD		T		Weight	
	Inch	mm	Inch	mm	Inch	mm	Inch	mm	Inch	mm	kg.	lb.
1/2	2.87	73	3.93	100	5.67	144	0.86	21.8	0.38	9.6	2.0	4.4
3/4	3.15	80	3.93	100	5.90	150	1.06	27.1	0.50	12.7	2.2	5.0
1	3.93	100	4.92	125	7.08	180	1.33	33.8	0.50	12.7	4.3	9.5
1 1/4	4.49	114	6.30	160	8.50	216	1.67	42.6	0.50	12.7	6.0	13.0
1 1/2	4.72	120	6.30	160	9.25	235	1.91	48.7	0.50	12.7	7.0	15.2
2	5.12	130	7.08	180	10.63	270	2.41	61.2	0.61	15.7	11.1	24.5

BILL OF MATERIALS

NO.	PART NAME	MATERIALS	Q'TY	REMARKS
1	BODY	A105N	1	
2	SEAT	A105N+HF	1	
3	WEDGE	A182 F6a	1	
4	STEM	A182 F6a	1	
5	GASKET	304 + FLEXIBLE GRAPHITE	1	
6	BONNET	A105N	1	
7	Bolt	A193 B7	4	
8	PACKING	GRAPHITE	1 SET	
9	PIN	304	2	
10	GLAND	420	1	
11	GLAND EYEBOLT	A193 B7	2	
12	GLAND FLANGE	A105N	1	
13	GLAND NUT	A194 2H	2	
14	THRUST WASHER	410	2	
15	STEM NUT	410	1	
16	HANDWHEEL	A197	1	
17	NAME PLATE	AL	1	
18	H/W NUT	1035	1	

WILLIAM E. VALVE CORPORATION
 38-52 REVIEW AVENUE
 LONG ISLAND CITY, NY 11101
 TEL: 718-392-1660
 FAX: 718-729-5106
 WWW.WILLIAMSVALVE.COM

TITLE: FORGED STEEL BOLTED BONNET GATE VALVE - CLASS 800			
MATERIAL: A105		UNITS: Inch, mm	
CLASS: 800	DATE: 5/18/06	SCALE: N.T.S.	
INSPECTION & TEST: API 598		SIZE: 1/2 - 2"	
SHELL HYDRO 2975 PSI	DRAWN BY: I.G.	FIG. No.: F80SW-2	
SEAT HYDRO 2175 PSI	CHK'D & APR'D BY: R.S.	F80T-2	
	REV: 01	F80TxSW-2	
		DWG No.: 38FGA060024	