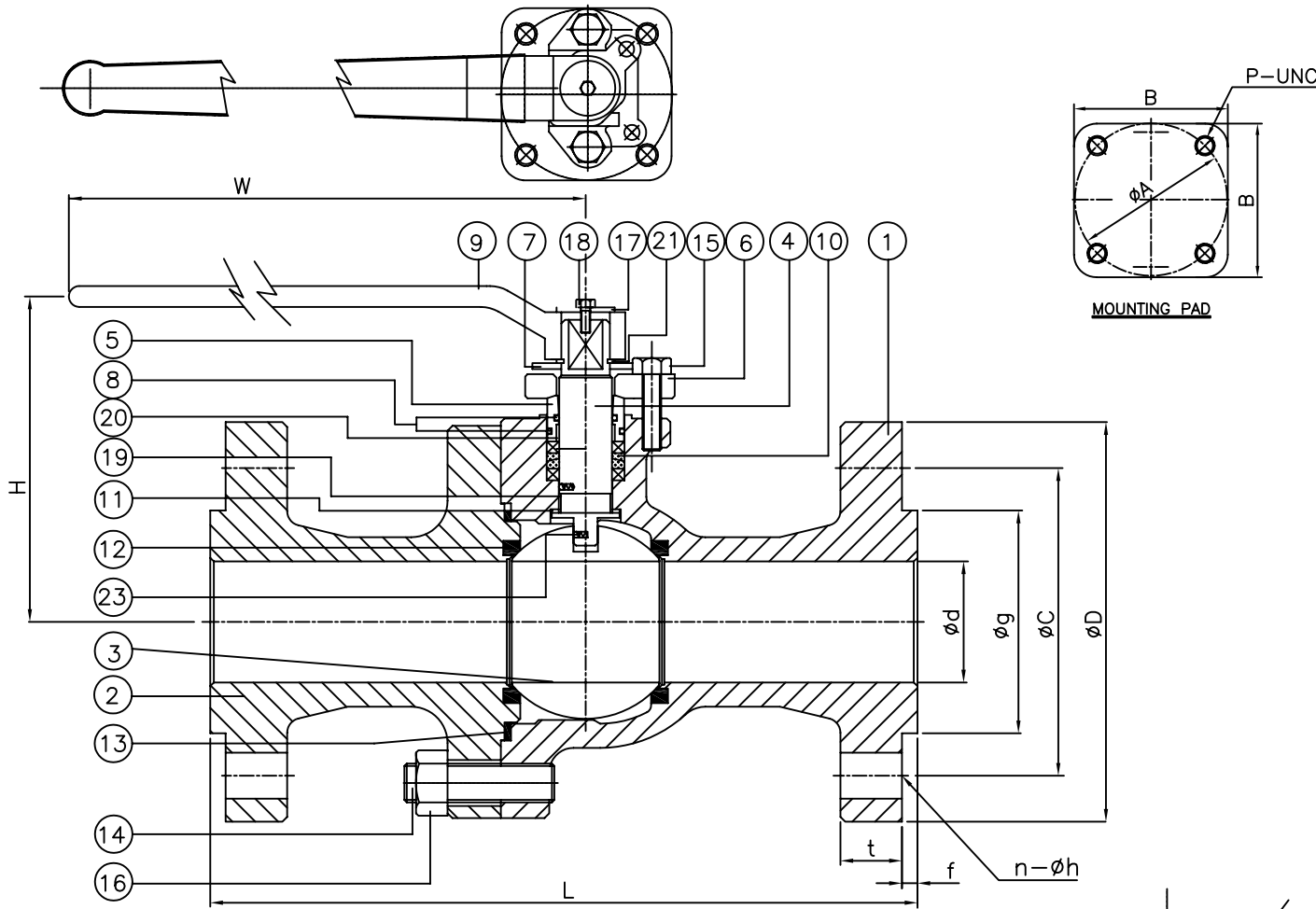


William E. Williams W67F6RT Class 600 Full Port Ball Valve ASTM A216 WCB

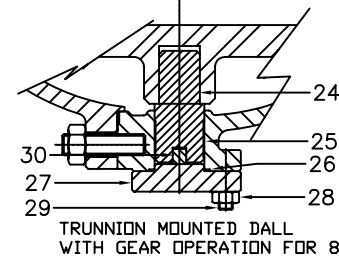


Unit : INCH

DIMENSION

SIZE	ød	øD	t	f	øg	øC	n	øh	L	H	W	øA	P-UNC	B
1"	1.00	4.88	0.69	0.25	2.00	3.50	4	0.75	8.50	4.13	6.70	2.00	4-1/4	2.00
1 1/2"	1.50	6.13	0.88	0.25	2.87	4.50	4	0.87	9.50	5.00	10.00	2.75	4-5/16	2.75
2"	2.00	6.50	1.00	0.25	3.62	5.00	8	0.75	11.50	5.43	10.00	2.75	4-5/16	2.75
3"	3.00	8.25	1.25	0.25	5.00	6.62	8	0.87	14.00	7.50	13.78	4.00	4-3/8	4.50
4"	4.00	10.75	1.50	0.25	6.19	8.50	8	1.00	17.00	8.26	18.12	5.00	4-3/8	4.50
6"	6.00	14.00	1.88	0.25	8.50	11.50	12	1.12	22.00	11.25	18.12	5.50	4-1/2	4.50
8"	8.00	16.50	2.19	0.25	10.63	13.75	12	1.25	26.00	13.12	13.12	7.50	4-1/2	ø8.50

REMARK: OPTIONAL GEAR OPERATION FOR 1"-6" AVAILABLE.
STANDARD GEAR OPERATION FOR 8".



No.	Fig No.	Material	Q'TY
	W67F6RT	WCB	
1	Body	A216-WCB	1
2	Cap	A216-WCB	1
3	Ball	A351-CF8M	1
4	Stem	A276-316	1
5	Gland Bush	A276-304	1
6	Gland	A216-WCB	1
7	Stopper	A240-304	1
8	O-Ring	NBR	2
9	Lever	A216-WCB	1
10	Gland Packing	GRAPHITE+CARBON YARN	1Set
11	Back Seat	PTFE	1
12	Ball Seat	RTFE	2
13	Gasket	SPW-316/GRAPHITE	1
14	Stud Bolt	A193-B7	1Set
15	Gland Bolt	A193-B8	2
16	Nut	A194-2H	1Set
17	Washer	A240-304	1
18	Bolt	A193-B8	1
19	Stem Bushing	PTFE	1
20	Gland Bushing	PTFE	1
21	Snap Ring	W1-8 (Cr Plated)	1
22	Lever Bolt	A193-B8	1
23	Antistatic Device	316SS	2Set
24	LOWER STEM	A276-316	1
25	SLEEVE	PTFE	1
26	GASKET	SPW-316/GRAPHITE	1
27	BOTTOM CAP	A216-WCB	1
28	NUT	A194-2H	1
29	BLT	A193-B7	1
30	PIN	A276-316	1



MARKING SYSTEM		INSPECTION & TEST: API 598	
DIM.OF FLANGE	ANSI B16.5	SHELL HYDRO	2225 PSI
FACE TO FACE	ANSI B16.10	SEAT AIR	80 PSI
WALL THICKNESS	ANSI 16.34	MATERIAL	A216 WCB
DESIGNED	API 608	TITLE CAST STEEL BALL VALVE CLASS 600 FLANGE END FULL PORT	
NO.	DATE	DESCRIPTION	PRP'D
			REV'D
			APP'D
SIZE	Fig #	DRAWING NO.	REV.
1"-8"	W67F6RT	38BL060230	SHEET-01