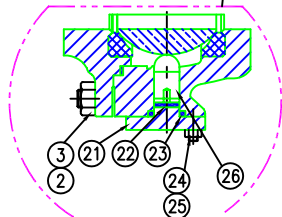
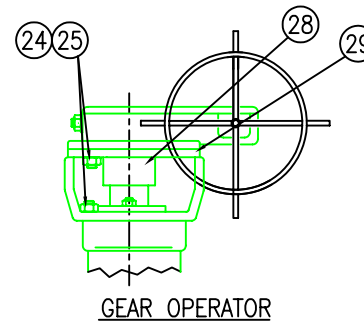
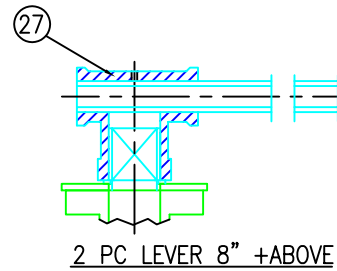
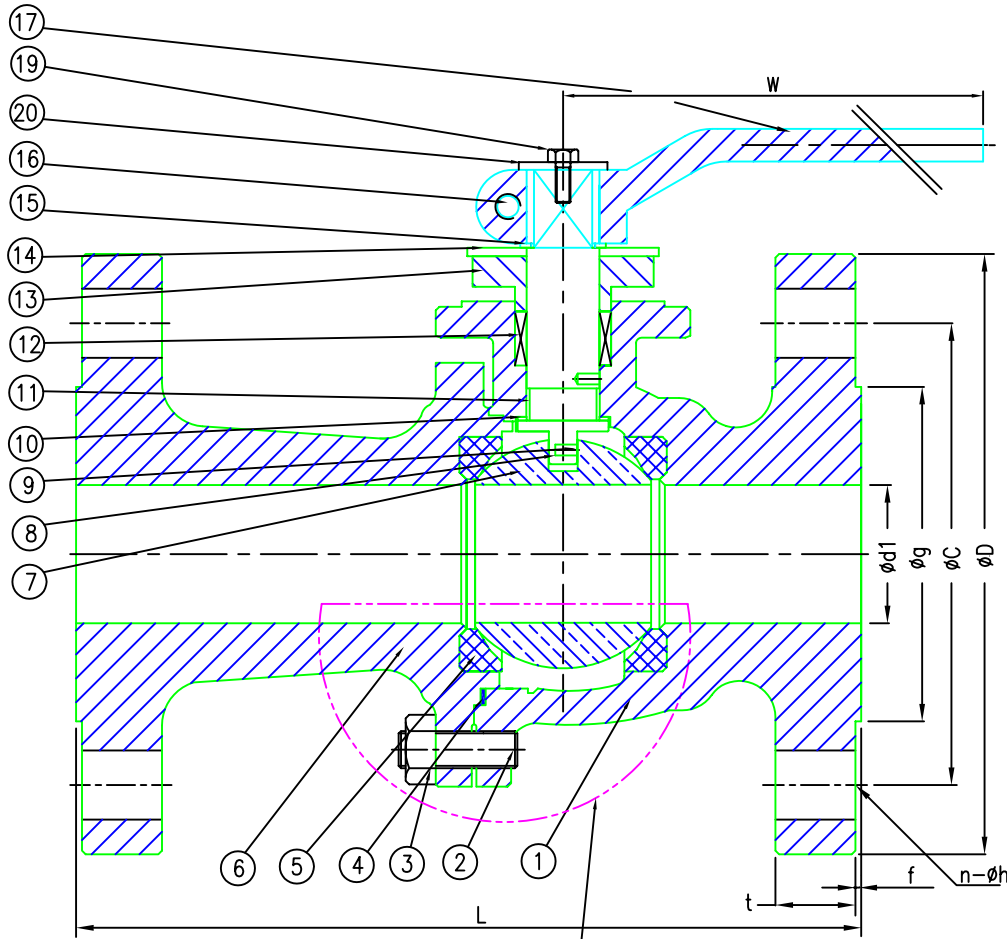
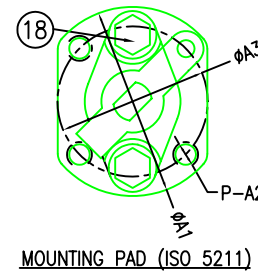


William E. Williams W17F66RT Class 150 Full Port Ball Valve ASTM A351 CF8M



SUPPORT VIEW
SIZES 10" AND 12"



BILL OF MATERIALS		
NO.	PART NAME	MATERIALS
1	BODY	ASTM A351 CF8M
2	STUD	ASTM 193 B8
3	NUT	ASTM A270 304
4	GASKET	304 + GRAPHITE
5	SEAT	PTFE
6	BODY CAP	ASTM A351 CF8M
7	BALL	ASTM A182 F316
8	STEM	ASTM A182 F316
9	ANTISTATIC DEVICE	316 SS
10	THRUST BEARING	PTFE
11	STEM BUSHING	METAL BACKED PTFE
12	PACKING	GRAPHITE
13	GLAND	ASTM A351 CF8M
14	STOPPER PLATE	A240-304
15	SNAP RING	18-8 SS(CR Plated)
16	BOLT	ASTM A193 B8M
17	LEVER	ASTM A216 WCB
18	GLAND BOLT	ASTM A270 304
19	LEVER BOLT	ASTM A193 B8
20	WASHER	A240-304
21	LOWER COVER	ASTM A105 Zn
22	THRUST BEARING	METAL BACKED PTFE
23	GASKET	FLEXIBLE GASKET
24	NUT	ASTM A194 2H
25	STUD	ASTM A193 B7
26	SUPPORT BEARING	METAL BACKED PTFE
27	THREE-WAY	ASTM A216 WCB.HZn
28	CONNECTOR	A105 Zn
29	YOKE	A216 (G) WCB

STD:	API6D
SHELL TEST	150 PSI
SEAT TEST (Hyd)	OPTIONAL
SEAT TEST (Air)	80 PSI

Unit:INCH

SIZE	ød1	øg	øC	øD	t	f	L	øh	H	W	øA1	øA3	P-A2
1.00"	0.98	2.00	3.12	4.25	0.44	0.060	5.00	4-0.62	3.54	6.25	3.54	2.75	4-M8
1.50"	1.50	2.88	3.87	5.00	0.56	0.060	6.50	4-0.62	4.25	7.87	3.54	2.75	4-M8
2.00"	2.00	3.62	4.75	6.00	0.62	0.060	7.00	4-0.75	5.00	10.00	3.54	2.75	4-M8
2.50"	2.50	4.12	5.50	7.00	0.69	0.060	7.50	4-0.75	6.10	10.00	3.54	2.75	4-M8
3.00"	3.00	5.00	6.00	7.50	0.75	0.060	8.00	4-0.75	7.10	15.75	3.54	2.75	4-M8
4.00"	4.00	6.19	7.50	9.00	0.94	0.060	9.00	8-0.75	7.87	15.75	3.54	2.75	4-M8
6.00"	6.00	8.50	9.50	11.00	1.00	0.060	15.50	8-0.87	11.33	23.62	3.54	2.75	4-M8
8.00"	8.00	10.62	11.75	13.50	1.12	0.060	18.00	8-0.87	13.62	27.50	8.27	6.50	4-M16
10.00"	10.0	12.75	14.25	16.00	1.19	0.060	21.00	12-0.87	20.00	6.73	7.28	8.27	4-M20
12.00"	11.81	15.00	17.00	19.02	1.25	0.060	24.00	12-0.98	25.59	6.73	7.28	8.27	4-M20

REV #	DATE	DESCRIPTION	APPROVED

REVISION RECORD

WILLIAM E. WILLIAMS VALVE CORPORATION
 38-52 REVIEW AVENUE LONG ISLAND CITY, NY 11101
 TEL: 718-392-1660 FAX: 718-729-5106

TITLE: CAST STAINLESS STEEL BALL VALVE CLASS 150 FULL PORT		MATERIAL: CF8M	UNITS: INCH
CLASS: 150 Lb	DATE:	SCALE: NTS	FIG. No.: W17F-66RT
SIZE: 1" - 12"	DRAWN BY:	DWG No.:	27BL060295
CHK'D & APR'D BY:			