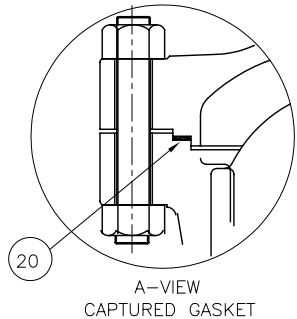
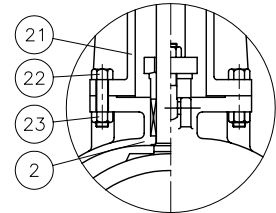
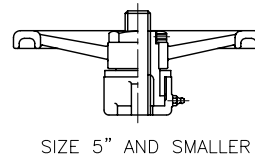
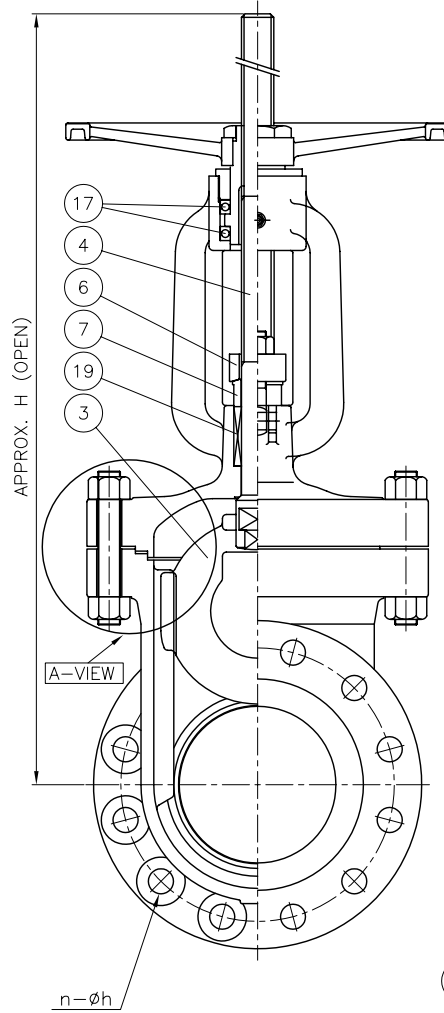
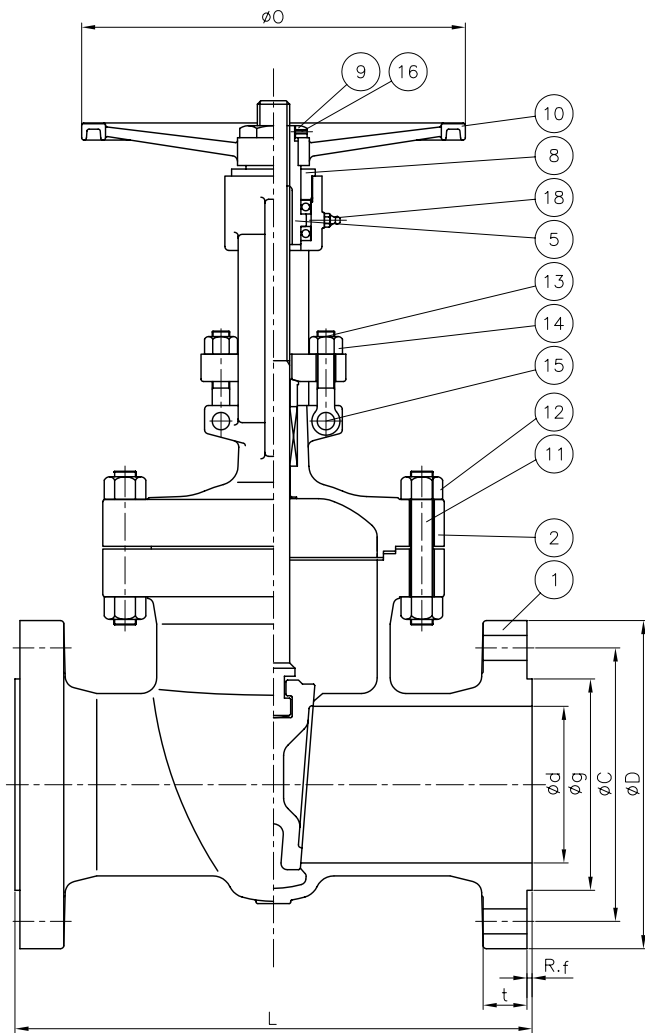


Wm. E. Williams No. S60F6-316

Class 600 OS&Y Gate Valve ASTM A351 CF8M



NO.	PART NAME	MATERIAL	Q'TY	REMARK
1	BODY	A351-CF8M	1	
2	BONNET	A351-CF8M	1	
3	WEDGE	A351-CF8M	1	
4	STEM	A276-316	1	
5	YOKE SLEEVE	A439-D 2	1	
6	GLAND FLANGE	A351-CF8	1	
7	PACKING GLAND	A276-316	1	
8	YOKE CAP	A351-CF8	1	
9	HANDWHEEL NUT	A276-304	1	
10	HANDWHEEL	A536	1	
11	BONNET STUD	A193-B8	1SET	
12	NUT	A194-8	1SET	
13	HINGED EYE BOLT	A276-304	2	
14	NUT	A194-8	2	
15	HINGE PIN	A276-304	2	
16	SET SCREW	A276-304	1	
17	THRUST BEARING	STEEL	2SET	NOTE 5
18	GREASE NIPPLE	STEEL	1	Cr PLATED
19	PACKING	GRAPHITE+CARBON FIBER	1SET	NOTE 4
20	GASKET	SPIRAL WOUND	1	
21	YOKE	A351-CF8	1	
22	YOKE BOLT /STUD	A193-B8	4	
23	YOKE BOLT NUT	A194-8	4	

NOTE

1. WALL THICKNESS : ANSI B16.34 CLASS 600
2. FACE TO FACE DIMENSIONS : ANSI B16.10 CLASS 600
3. END FLANGE DIMENSIONS : ANSI B16.5 CLASS 600
4. GRAPHITE/CARBON FIBRE OR PTFE (SPECIFY WHEN ORDER)
5. THRUST BALL BEARINGS: 6" & ABOVE

UNIT:INCH

SIZE	L	d	D	C	g	t	R.F	n-h	O	H
2.00	11.50	2.00	6.50	5.00	3.65	1.00	0.25	8-0.75	7.90	15.50
2.50	13.00	2.50	7.50	5.90	4.12	1.15	0.25	8-0.87	8.85	16.85
3.00	14.00	3.00	8.25	6.65	5.00	1.25	0.25	8-0.87	9.85	18.70
4.00	17.00	4.00	10.75	8.50	6.25	1.50	0.25	8-1.00	13.88	23.40
5.00	20.00	5.00	13.00	10.50	7.35	1.75	0.25	8-1.12	15.75	28.55
6.00	22.00	6.00	14.00	11.50	8.50	1.87	0.25	12-1.12	17.75	31.50
8.00	26.00	7.90	16.50	13.75	10.65	2.20	0.25	12-1.25	19.70	39.60
10.0	31.00	9.75	20.00	17.00	12.75	2.50	0.25	16-1.37	24.80	46.95
12.0	33.00	11.75	22.00	19.25	15.00	2.65	0.25	20-1.37	24.80	58.70

WILLIAM E. **WILLIAMS**
 VALVE CORPORATION
 38-52 REVIEW AVE L.I.C N.Y 1110

TITLE : CAST STAINLESS STEEL GATE VALVE

06/01		CAPTURED GASKET		DATE		DR. Liang		CHK.		APP'D		DWG# 11GA06173			
STYLE: B.B OS&Y				CLASS: 600				Fig# S60F6-316				SIZE: 2"-12"			
MAT'L: CF8M				SCALE: NONE				SHEET: 1							