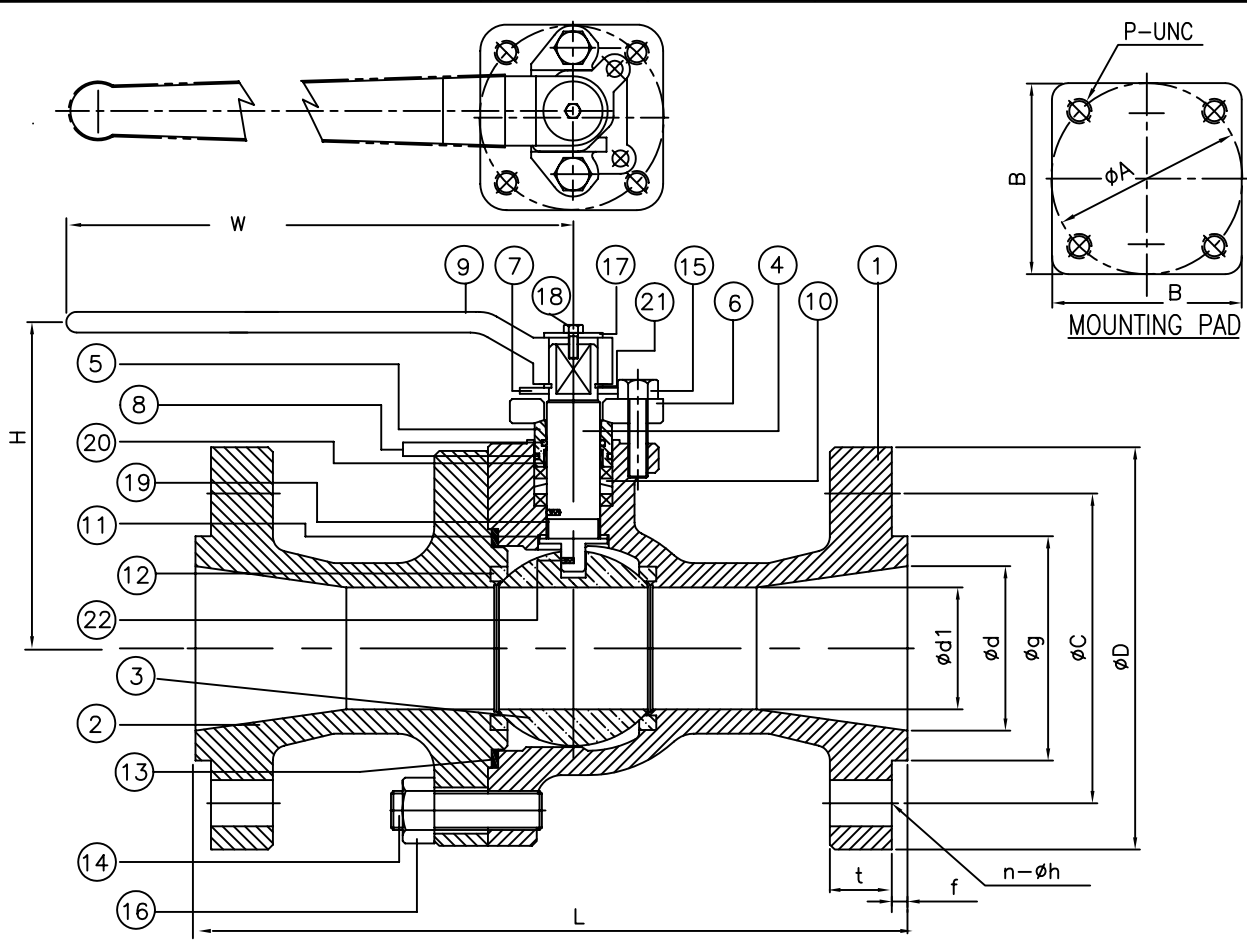


William E. Williams W66F66RT Class 600 Std. Port Ball Valve ASTM A351 CF8M



No.	Fig No.	Material	Q'TY
	Part Name		
	W66F66RT	A351-CF8M	
1	Body	A351-CF8M	1
2	Cap	A351-CF8M	1
3	Ball	A351-CF8M	1
4	Stem	A276-316	1
5	Gland Bush	A276-304	1
6	Gland	A351-CF8	1
7	Stopper	A240-304	1
8	O-Ring	NBR	2
9	Lever	A216-WCB	1
10	Gland Packing	GRAPHITE+CARBON YARN	1Set
11	Back Seat	PTFE	1
12	Ball Seat	RTFE	2
13	Gasket	SPW-316/GRAPHITE	1
14	Stud Bolt	A193-B8	1Set
15	Gland Bolt	A193-B8	2
16	Nut	A194-8	1Set
17	Washer	A240-304	1
18	Bolt	A193-B8	1
19	Stem Bushing	PTFE	1
20	Gland Bushing	PTFE	1
21	Snap Ring	W1-8 (Cr Plated)	1
22	Antistatic Device	316SS	2Set

DIMENSION

Unit : INCH

SIZE	ød	øD	t	f	øg	øC	n	øh	L	H	W	øA	P-UNC	B
2"	2.00	6.50	1.00	0.25	3.62	5.00	8	0.75	11.50	5.43	10.00	2.75	4-5/16	2.75
3"	3.00	8.25	1.25	0.25	5.00	6.62	8	0.87	14.00	7.50	13.78	4.00	4-3/8	4.50
4"	4.00	10.75	1.50	0.25	6.19	8.50	8	1.00	17.00	8.26	18.12	5.00	4-3/8	4.50
6"	6.00	14.00	1.88	0.25	8.50	11.50	12	1.12	22.00	11.25	18.12	5.50	4-1/2	4.50
8"	8.00	16.50	2.19	0.25	10.63	13.75	12	1.25	26.00	26.00	13.12	7.50	4-1/2	ø8.50

REMARK: OPTIONAL GEAR OPERATION FOR 1"-6" AVAILABLE.
STANDARD GEAR OPERATION FOR 8".

MARKING SYSTEM	INSPECTION & TEST: API 598
DIM.OF FLANGE FACE TO FACE	ANSI B16.5 SHELL HYDRO 2250 PSI
WALL THICKNESS	ANSI B16.10 SEAT AIR 80 PSI
	ANSI 16.34 MATERIAL A351 CF8M
DESIGNED	BS-5351



TITLE				
CAST STAINLESS STEEL BALL VALVE				
CLASS 600 REGULAR PORT				
SIZE	Fig #	DRAWING NO.	REV.	
2"-8"	W66F66RT	11BL060241	SHEET-01	

NO.	DATE	DESCRIPTION	PRP'D	REV'D	APP'D