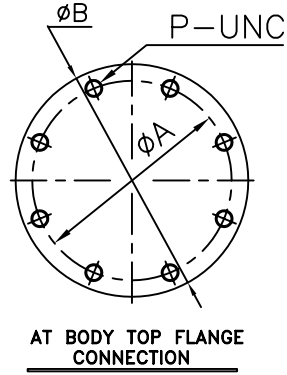
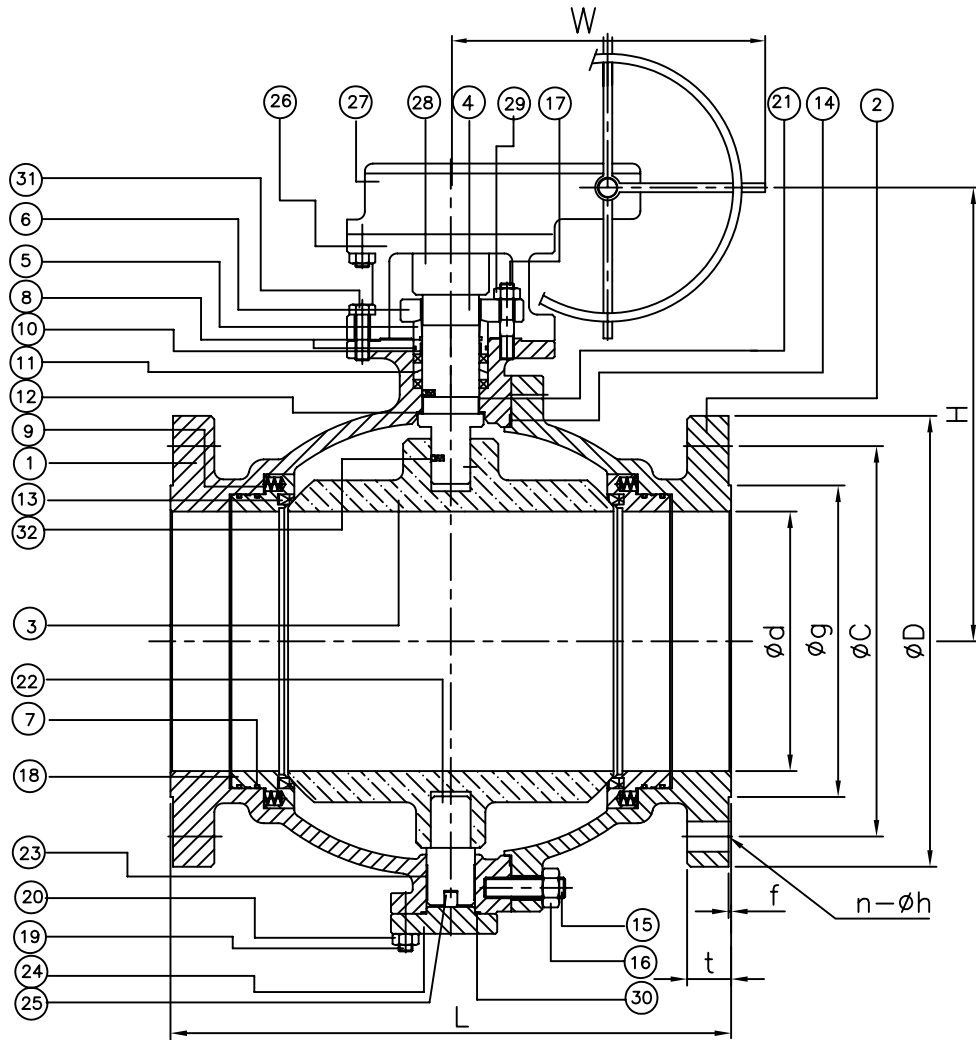


# William E. Williams W37F66RT-GO Class 300 Full Port Ball Valve ASTM A351 CF8M



No.	Part Name	Material	Q'TY
	Fig No.	W37F66RT-GO	
	Material	A351-CF8M	
1	Body	A351-CF8M	1
2	Cap	A351-CF8M	1
3	Ball	A351-CF8M	1
4	Stem	A276-316	1
5	Gland Bush	A276-304	1
6	Gland	A351-CF8M	1
7	O-Ring	VITON	4
8	O-Ring	NBR	2
9	Spring	INCONEL -600	*
10	Gland Bearing	PTFE	1
11	Gland Packing	GRAPHITE+CARBON YARN	1Set
12	Back Seat	PTFE	1
13	Ball Seat	RTFE	2
14	Gasket	SPW-316/GRAPHITE	1
15	Stud Bolt	A193-B7	*
16	Nut	A194-2H	*
17	Gland Bolt	A193-B8	2
18	Seat Retainer	A351-CF8M	2
19	Bolt	A193-B7	4
20	Nut	A194-2H	4
21	Stem Bushing	PTFE	1
22	Lower Stem	A276-316	1
23	Sleeve	PTFE	1
24	Bottom Cap	A351-CF8M	1
25	Pin	A276-316	1
26	Bracket	A351-CF8M	1
27	Worm Gear Box	DUCTILE	1Set
28	Coupling	Steel(Zn Plated)	1
29	Nut	A194-8	2
30	Gasket	SPW-316/GRAPHITE	1
31	Hex Bolt	A193-B7	8
32	Antistatic Device	316SS	2Set

Unit : Inch

DIMENSION

SIZE	ød	øD	t	f	øg	øC	n	øh	L	H	øA	øB	P-UNC	W
10"	10.00	17.50	1.88	0.06	12.75	15.25	16	1.12	22.39	20.07	7.50	8.75	8-5/8	13.11
12"	12.00	20.50	2.00	0.06	15.00	17.75	16	1.25	25.50	21.65	7.50	8.75	8-5/8	18.58
14"	13.25	23.00	2.12	0.06	16.25	20.25	20	1.25	30.00	24.76	9.05	10.43	8-5/8	18.58
16"	15.25	25.50	2.25	0.06	18.50	22.50	20	1.37	33.00	25.37	9.05	10.43	8-5/8	18.58

Remark-Larger Sizes Available up to 24".

NO.	DATE	DESCRIPTION	PRP'D	REV'D	APP'D

MARKING SYSTEM	INSPECTION & TEST: API 598
DIM.OF FLANGE	ANSI B16.5 SHELL HYDRO 1125 PSI
FACE TO FACE	ANSI B16.10 SEAT AIR 80 PSI
WALL THICKNESS	ANSI 16.34 MATERIAL A216 WCB
DESIGNED	API 608



TITLE: CAST STAINLESS STEEL BALL VALVE		CLASS 300 FLANGE END FULL PORT	
SIZE	Fig #	DRAWING NO.	REV.
10"-16"	W37F66RT-GO	11BL060235	SHEET-02