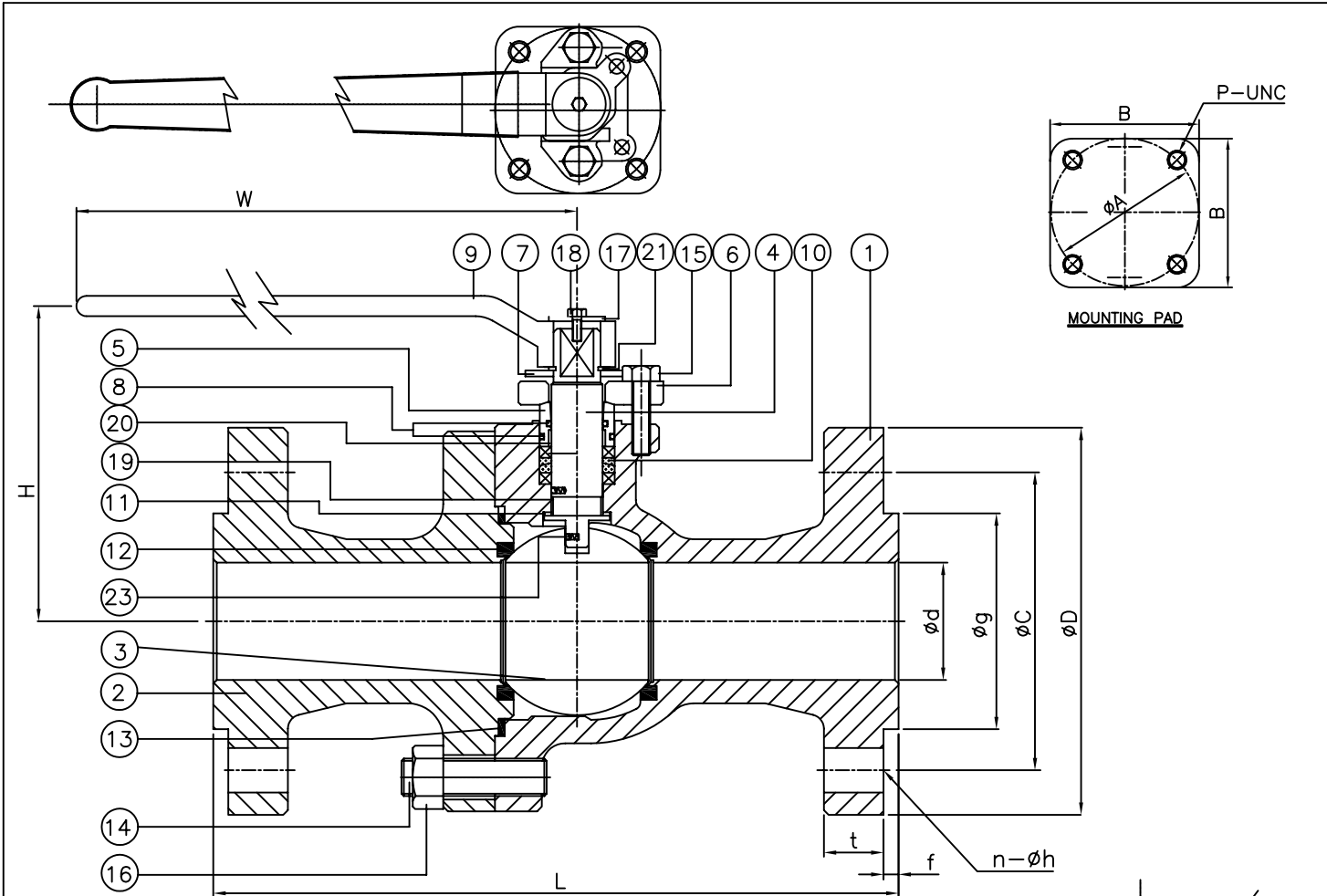


William E. Williams W67F66RT Class 600 Full Port Ball Valve ASTM A351 CF8M



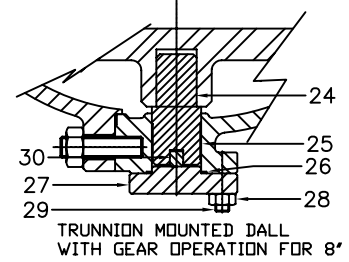
Unit : INCH

DIMENSION

SIZE	ϕd	ϕD	t	f	ϕg	ϕC	n	ϕh	L	H	W	ϕA	P-UNC	B
1"	1.00	4.88	0.69	0.25	2.00	3.50	4	0.75	8.50	4.13	6.70	2.00	4-1/4	2.00
1 1/2"	1.50	6.13	0.88	0.25	2.87	4.50	4	0.87	9.50	5.00	10.00	2.75	4-5/16	2.75
2"	2.00	6.50	1.00	0.25	3.62	5.00	8	0.75	11.50	5.43	10.00	2.75	4-5/16	2.75
3"	3.00	8.25	1.25	0.25	5.00	6.62	8	0.87	14.00	7.50	13.78	4.00	4-3/8	4.50
4"	4.00	10.75	1.50	0.25	6.19	8.50	8	1.00	17.00	8.26	18.12	5.00	4-3/8	4.50
6"	6.00	14.00	1.88	0.25	8.50	11.50	12	1.12	22.00	11.25	18.12	5.50	4-1/2	4.50
8"	8.00	16.50	2.19	0.25	10.63	13.75	12	1.25	26.00	26.00	13.12	7.50	4-1/2	$\phi 8.50$

REMARK: OPTIONAL GEAR OPERATION FOR 1"-6" AVAILABLE.
STANDARD GEAR OPERATION FOR 8".

NO.	DATE	DESCRIPTION	PRP'D	REV'D	APP'D



TRUNNION MOUNTED BALL WITH GEAR OPERATION FOR 8"

No.	Fig No.	Material	Q'TY
		W67F66RT	
		A351-CF8M	
1	Body	A351-CF8M	1
2	Cap	A351-CF8M	1
3	Ball	A351-CF8M	1
4	Stem	A276-316	1
5	Gland Bush	A276-304	1
6	Gland	A351-CF8M	1
7	Stopper	A240-304	1
8	O-Ring	NBR	2
9	Lever	A216-WCB	1
10	Gland Packing	GRAPHITE+CARBON YARN	1Set
11	Back Seat	PTFE	1
12	Ball Seat	RTFE	2
13	Gasket	SPW-316/GRAPHITE	1
14	Stud Bolt	A193-B7	1Set
15	Gland Bolt	A193-B8	2
16	Nut	A194-2H	1Set
17	Washer	A240-304	1
18	Bolt	A193-B8	1
19	Stem Bushing	PTFE	1
20	Gland Bushing	PTFE	1
21	Snap Ring	18-8 S.S (Cr Plated)	1
22	Lever Bolt	A193-B8	1
23	Antistatic Device	316SS	2Set
24	LOWER STEM	A276-316	1
25	SLEEVE	PTFE	1
26	GASKET	SPW-316/GRAPHITE	1
27	BOTTOM CAP	A351-CF8M	1
28	NUT	A194-2H	1
29	BOLT	A193-B7	1
30	PIN	A276-316	1



WILLIAMS
VALVE CORPORATION

MARKING SYSTEM	INSPECTION & TEST: API 598
DIM.OF FLANGE	ANSI B16.5
FACE TO FACE	ANSI B16.10
WALL THICKNESS	ANSI 16.34
DESIGNED	API 608
	SHELL HYDRO 2225 PSI
	SEAT AIR 80 PSI
	MATERIAL A216 WCB

TITLE: CAST STAINLESS STEEL BALL VALVE CLASS 600 FLANGED END FULL PORT			
SIZE	Fig #	DRAWING NO.	REV.
1"-8"	W67F66RT	11BL060233	SHEET-01